

Product datasheet for **TA384702**

LC3B (MAP1LC3B) Rabbit Polyclonal Antibody

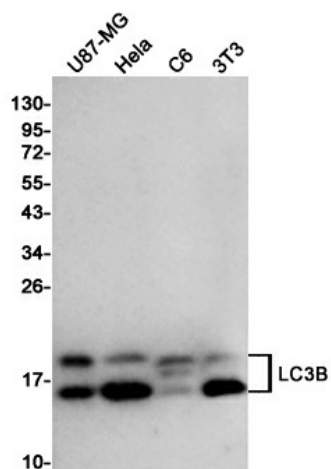
Product data:

| | |
|-------------------------|--|
| Product Type: | Primary Antibodies |
| Applications: | IF, IP, WB |
| Recommended Dilution: | WB: 1/1000 ICC/IF: 1/100 IP: 1/50 |
| Reactivity: | Human, Mouse, Rat |
| Host: | Rabbit |
| Isotype: | IgG |
| Clonality: | Polyclonal |
| Immunogen: | A synthetic peptide of human LC3B |
| Formulation: | 50mM Tris-Glycine(pH 7.4), 0.15M NaCl, 40% Glycerol, 0.01% Sodium azide and 0.05% BSA |
| Concentration: | lot specific |
| Purification: | Affinity Purified |
| Conjugation: | Unconjugated |
| Storage: | Store at 4°C short term. Aliquot and store at -20°C long term. Avoid freeze/thaw cycles. |
| Stability: | 1 year |
| Predicted Protein Size: | Calculated MW: 15 kDa; Observed MW: 14.16 kDa |
| Gene Name: | microtubule associated protein 1 light chain 3 beta |
| Database Link: | Entrez Gene 81631 Human Q9GZQ8 |
| Background: | Swiss-Prot Acc.Q9GZQ8. |
| Synonyms: | LC3B; MAP1A/1BLC3; MAP1ALC3 |



[View online »](#)

Product images:



Western blot analysis of LC3B in U87-MG, HeLa, C6 and 3T3 lysates using LC3B antibody.