

## Product datasheet for **TA384701**

### LC3B (MAP1LC3B) Rabbit Polyclonal Antibody

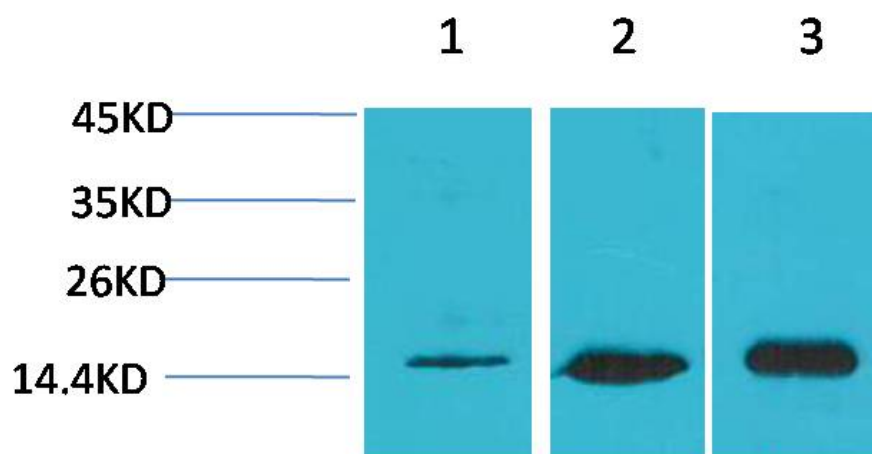
#### Product data:

Product Type:	Primary Antibodies
Applications:	IF, IHC, WB
Recommended Dilution:	WB: 1/1000-2000 IHC: 1/200-500 IF: 1/200
Reactivity:	Human, Mouse, Rat
Host:	Rabbit
Isotype:	IgG
Clonality:	Polyclonal
Immunogen:	Recombinant Protein of MAP LC3 $\beta$
Formulation:	Liquid in PBS containing 50% glycerol, 0.5% BSA and 0.02% sodium azide, pH 7.3.
Concentration:	lot specific
Purification:	Affinity Purified
Conjugation:	Unconjugated
Storage:	Store at 4°C short term. Aliquot and store at -20°C long term. Avoid freeze/thaw cycles.
Stability:	1 year
Predicted Protein Size:	Observed MW (kDa):14,16
Gene Name:	microtubule associated protein 1 light chain 3 beta
Database Link:	<a href="#">Entrez Gene 81631 Human</a> <a href="#">Q9GZQ8</a>
Background:	Swiss-Prot Acc.Q9GZQ8.
Synonyms:	LC3B; MAP1A/1BLC3; MAP1ALC3

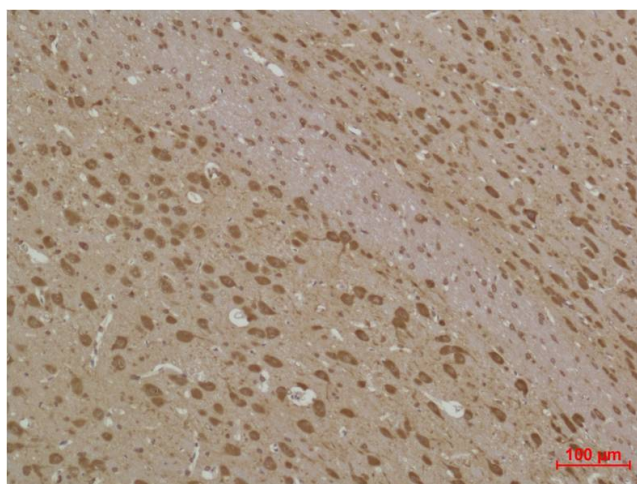


[View online »](#)

## Product images:



Western blot analysis of LC3B in Hela, 3T3, rat Brain lysates using LC3B antibody.



Immunohistochemical analysis of paraffin-embedded Rat Brain Tissue using LC3B Rabbit pAb diluted at 1:500.