

## Product datasheet for **TA384700**

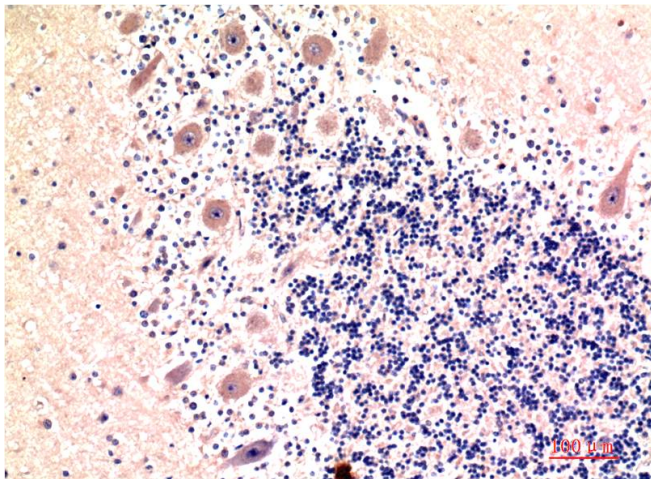
### LC3B (MAP1LC3B) Mouse Monoclonal Antibody [Clone ID: 8H6-6D10-3A4]

#### Product data:

Product Type:	Primary Antibodies
Clone Name:	8H6-6D10-3A4
Applications:	IHC
Recommended Dilution:	IHC: 1/100-200
Reactivity:	Human
Host:	Mouse
Isotype:	IgG1
Clonality:	Monoclonal
Immunogen:	Purified recombinant protein expressed in E.coli.
Formulation:	Liquid in PBS containing 50% glycerol, 0.5% BSA and 0.03% Proclin 300, pH 7.3.
Concentration:	lot specific
Purification:	Affinity Purified
Conjugation:	Unconjugated
Storage:	Store at 4°C short term. Aliquot and store at -20°C long term. Avoid freeze/thaw cycles.
Stability:	1 year
Predicted Protein Size:	14,16kDa
Gene Name:	microtubule associated protein 1 light chain 3 beta
Database Link:	<a href="#">Entrez Gene 81631 Human Q9GZQ8</a>
Background:	Swiss-Prot Acc.Q9GZQ8.Ubiquitin-like modifier involved in formation of autophagosomal vacuoles (autophagosomes). Plays a role in mitophagy which contributes to regulate mitochondrial quantity and quality by eliminating the mitochondria to a basal level to fulfill cellular energy requirements and preventing excess ROS production. Whereas LC3s are involved in elongation of the phagophore membrane, the GABARAP/GATE-16 subfamily is essential for a later stage in autophagosome maturation. Promotes primary ciliogenesis by removing OFD1 from centriolar satellites via the autophagic pathway.
Synonyms:	LC3B; MAP1A/1BLC3; MAP1ALC3



[View online »](#)

**Product images:**

Immunohistochemistry analysis of paraffin-embedded Human Brain Tissue using LC3B (8H6) antibody. High-pressure and temperature Sodium Citrate pH 6.0 was used for antigen retrieval.