

Product datasheet for **TA384697S**

MAP1LC3A Rabbit Monoclonal Antibody [Clone ID: R07-9B1]

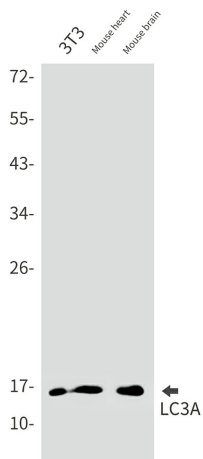
Product data:

| | |
|-------------------------|---|
| Product Type: | Primary Antibodies |
| Clone Name: | R07-9B1 |
| Applications: | IHC, IP, WB |
| Recommended Dilution: | WB: 1/2000 IHC: 1/20-1/100 IP: 1/20 |
| Reactivity: | Human, Mouse, Rat |
| Host: | Rabbit |
| Isotype: | IgG |
| Clonality: | Monoclonal |
| Immunogen: | A synthetic peptide of human MAP1LC3A |
| Formulation: | 50mM Tris-Glycine(pH 7.4), 0.15M NaCl, 40% Glycerol, 0.01% Sodium azide and 0.05% BSA |
| Concentration: | lot specific |
| Purification: | Affinity Purified |
| Conjugation: | Unconjugated |
| Storage: | Store at 4°C short term. Aliquot and store at -20°C long term. Avoid freeze/thaw cycles. |
| Stability: | 1 year |
| Predicted Protein Size: | Calculated MW: 14 kDa; Observed MW: 16 kDa |
| Gene Name: | microtubule associated protein 1 light chain 3 alpha |
| Database Link: | Entrez Gene 84557 Human Q9H492 |
| Background: | Swiss-Prot Acc.Q9H492.Ubiquitin-like modifier involved in formation of autophagosomal vacuoles (autophagosomes) (PubMed:20713600, PubMed:24290141). Whereas LC3s are involved in elongation of the phagophore membrane, the GABARAP/GATE-16 subfamily is essential for a later stage in autophagosome maturation (PubMed:20713600). |
| Synonyms: | LC3; LC3A; MAP1ALC3; MAP1BLC3; OTTHUMP00000030698 |

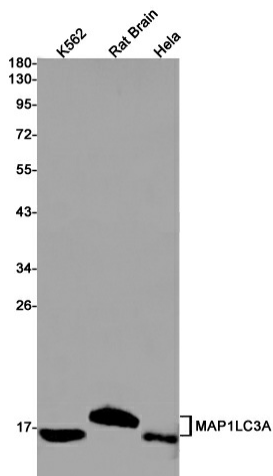


[View online »](#)

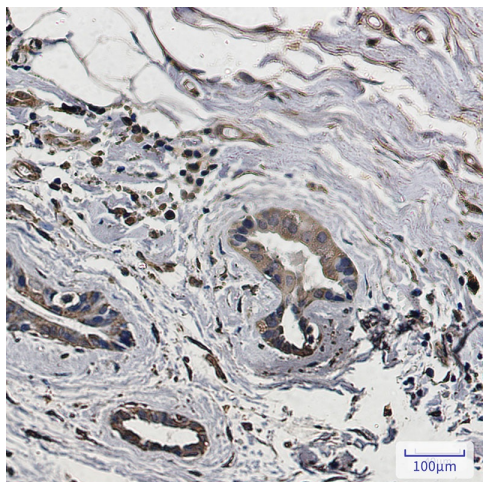
Product images:



Western blot analysis of LC3A in 3T3, mouse heart, mouse brain lysates using LC3A antibody.



Western blot analysis of LC3A in K562, rat Brain, HeLa lysates using LC3A antibody.



Immunohistochemistry analysis of paraffin-embedded Human breast cancer using LC3A antibody. High-pressure and temperature Sodium Citrate pH 6.0 was used for antigen retrieval.

