

Product datasheet for **TA384697**

MAP1LC3A Rabbit Monoclonal Antibody [Clone ID: R07-9B1]

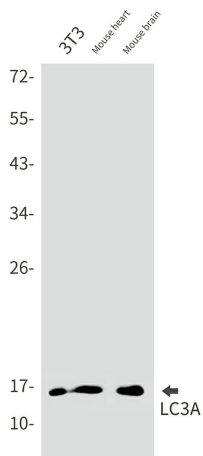
Product data:

Product Type:	Primary Antibodies
Clone Name:	R07-9B1
Applications:	IHC, IP, WB
Recommended Dilution:	WB: 1/2000 IHC: 1/20-1/100 IP: 1/20
Reactivity:	Human, Mouse, Rat
Host:	Rabbit
Isotype:	IgG
Clonality:	Monoclonal
Immunogen:	A synthetic peptide of human MAP1LC3A
Formulation:	50mM Tris-Glycine(pH 7.4), 0.15M NaCl, 40% Glycerol, 0.01% Sodium azide and 0.05% BSA
Concentration:	lot specific
Purification:	Affinity Purified
Conjugation:	Unconjugated
Storage:	Store at 4°C short term. Aliquot and store at -20°C long term. Avoid freeze/thaw cycles.
Stability:	1 year
Predicted Protein Size:	Calculated MW: 14 kDa; Observed MW: 16 kDa
Gene Name:	microtubule associated protein 1 light chain 3 alpha
Database Link:	Entrez Gene 84557 Human Q9H492
Background:	Swiss-Prot Acc.Q9H492.Ubiquitin-like modifier involved in formation of autophagosomal vacuoles (autophagosomes) (PubMed:20713600, PubMed:24290141). Whereas LC3s are involved in elongation of the phagophore membrane, the GABARAP/GATE-16 subfamily is essential for a later stage in autophagosome maturation (PubMed:20713600).
Synonyms:	LC3; LC3A; MAP1ALC3; MAP1BLC3; OTTHUMP00000030698

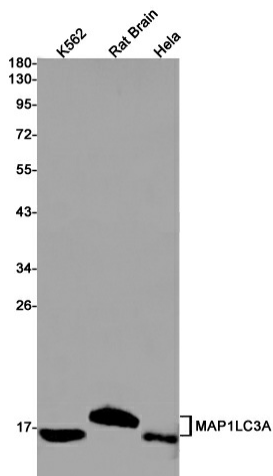


[View online »](#)

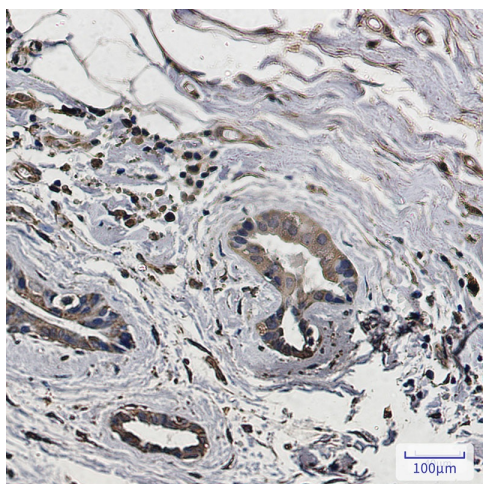
Product images:



Western blot analysis of LC3A in 3T3, mouse heart, mouse brain lysates using LC3A antibody.



Western blot analysis of LC3A in K562, rat Brain, HeLa lysates using LC3A antibody.



Immunohistochemistry analysis of paraffin-embedded Human breast cancer using LC3A antibody. High-pressure and temperature Sodium Citrate pH 6.0 was used for antigen retrieval.

