

## Product datasheet for **TA384696**

### MAP1LC3A Rabbit Polyclonal Antibody

#### Product data:

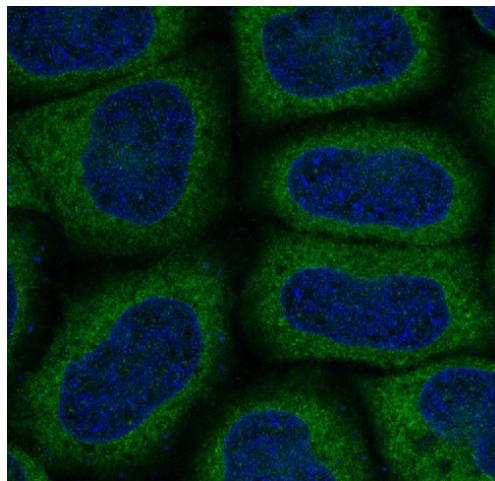
Product Type:	Primary Antibodies
Applications:	FC, IF, IHC, IP, WB
Recommended Dilution:	WB: 1/500-1/2000 IHC: 1/50-1/200 ICC/IF: 1/50-1/200 IP: 1/50
Reactivity:	Human, Mouse, Rat
Host:	Rabbit
Isotype:	IgG
Clonality:	Polyclonal
Immunogen:	A synthesized peptide derived from human MAP1LC3A
Formulation:	Rabbit IgG in phosphate buffered saline , pH 7.4, 150mM NaCl, 0.02% sodium azide and 50% glycerol.
Concentration:	lot specific
Purification:	Affinity Chromatography
Conjugation:	Unconjugated
Storage:	Store at 4°C short term. Aliquot and store at -20°C long term. Avoid freeze/thaw cycles.
Stability:	1 year
Predicted Protein Size:	16kDa
Gene Name:	microtubule associated protein 1 light chain 3 alpha
Database Link:	<a href="#">Entrez Gene 84557 Human Q9H492</a>
Background:	Swiss-Prot Acc.Q9H492.Autophagy marker Light Chain 3 (LC3) was originally identified as a subunit of microtubule-associated proteins 1A and 1B (termed MAP1LC3), and subsequently found to contain similarity to the yeast protein Apg8/Aut7/Cvt5 critical for autophagy. Three human LC3 isoforms (LC3A, LC3B, and LC3C) undergo post-translational modifications during autophagy. Cleavage of LC3 at the carboxy terminus immediately following synthesis yields the cytosolic LC3-I form.



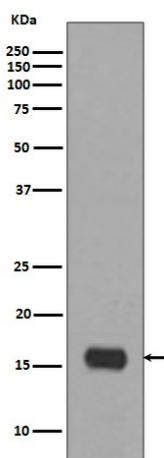
[View online »](#)

Synonyms: LC3; LC3A; MAP1ALC3; MAP1BLC3; OTTHUMP00000030698

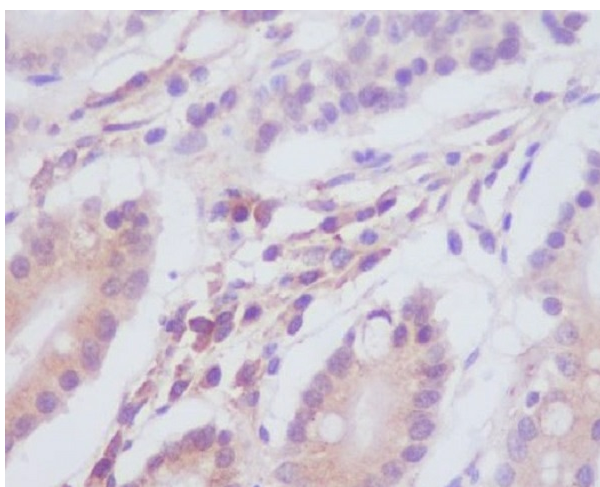
### Product images:



Immunofluorescent analysis of HeLa cells, using LC3A Antibody .



Western blot analysis of LC3A in HeLa lysates using LC3A antibody.



Immunohistochemical analysis of paraffin-embedded human stomach, using LC3A Antibody.