

Product datasheet for **TA384694**

MAGEC1 Mouse Monoclonal Antibody [Clone ID: 8C5-8G7-4F4]

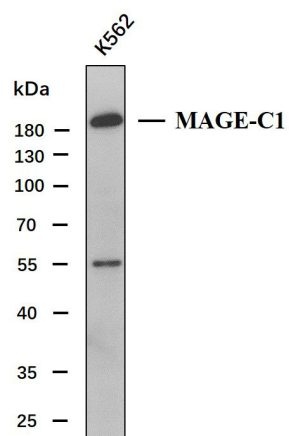
Product data:

Product Type:	Primary Antibodies
Clone Name:	8C5-8G7-4F4
Applications:	IHC, WB
Recommended Dilution:	IHC-p: 1/100-1/500 WB: 1/500-1/2000
Reactivity:	Human
Host:	Mouse
Isotype:	IgG2b, kappa
Clonality:	Monoclonal
Immunogen:	Synthesized peptide derived from human MAGE-C1
Formulation:	Liquid in PBS containing 50% glycerol, 0.5% BSA and 0.02% sodium azide, pH 7.3.
Concentration:	lot specific
Purification:	Affinity Chromatography
Conjugation:	Unconjugated
Storage:	Store at 4°C short term. Aliquot and store at -20°C long term. Avoid freeze/thaw cycles.
Stability:	1 year
Predicted Protein Size:	Observed MW (kDa): 190
Gene Name:	MAGE family member C1
Database Link:	Entrez Gene 9947 Human O60732
Synonyms:	CT7; CT7.1; MAGE-C1; MGC39366



[View online »](#)

Product images:



Whole cell lysates of K562(30ug) were separated by 10% SDS-PAGE, and the membrane was blotted with MAGE-C1 antibody. The HRP-conjugated anti-Mouse IgG antibody was used to detect the antibody.

Predicted band size: 124kDa
Observed band size: 190kDa

Western blot analysis of MAGE-C1Antibody at 1:1000 dilution.