

## Product datasheet for TA384693M

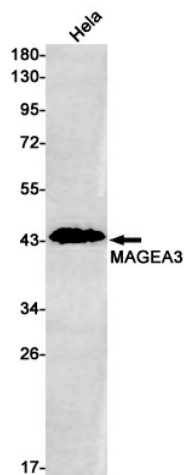
### MAGEA3 Rabbit Monoclonal Antibody [Clone ID: R07-8A2]

#### Product data:

Product Type:	Primary Antibodies
Clone Name:	R07-8A2
Applications:	WB
Recommended Dilution:	WB: 1/1000
Reactivity:	Human
Host:	Rabbit
Isotype:	IgG
Clonality:	Monoclonal
Immunogen:	Recombinant protein of human MAGEA3
Formulation:	50mM Tris-Glycine(pH 7.4), 0.15M NaCl, 40% Glycerol, 0.01% Sodium azide and 0.05% BSA
Concentration:	lot specific
Purification:	Affinity Purified
Conjugation:	Unconjugated
Storage:	Store at 4°C short term. Aliquot and store at -20°C long term. Avoid freeze/thaw cycles.
Stability:	1 year
Predicted Protein Size:	Calculated MW: 35 kDa; Observed MW: 45 kDa
Gene Name:	MAGE family member A3
Database Link:	<a href="#">Entrez Gene 4102 Human P43357</a>
Background:	Swiss-Prot Acc.P43357.Proposed to enhance ubiquitin ligase activity of RING-type zinc finger-containing E3 ubiquitin-protein ligases. May enhance ubiquitin ligase activity of TRIM28 and stimulate p53/TP53 ubiquitination by TRIM28. Proposed to act through recruitment and/or stabilization of the Ubl-conjugating enzyme (E2) at the E3:substrate complex. May play a role in embryonal development and tumor transformation or aspects of tumor progression. In vitro promotes cell viability in melanoma cell lines. Antigen recognized on a melanoma by autologous cytolytic T-lymphocytes.
Synonyms:	CT1.3; HIP8; HYPD; MAGE3; MAGEA6; MGC14613


[View online »](#)

## Product images:



Western blot analysis of MAGEA3 in HeLa lysates using MAGEA3 antibody.