

## Product datasheet for **TA384692**

### MAD2L2 Rabbit Polyclonal Antibody

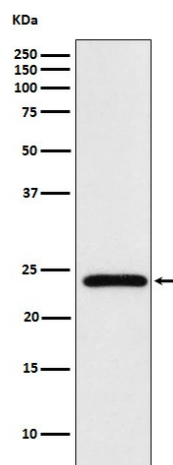
#### Product data:

Product Type:	Primary Antibodies
Applications:	FC, IF, IHC, IP, WB
Recommended Dilution:	WB: 1/500-1/1000 IHC: 1/100-1/500 ICC/IF: 1/50-1/200 IP: 1/30 FC: 1/40
Reactivity:	Human, Mouse, Rat
Host:	Rabbit
Isotype:	IgG
Clonality:	Polyclonal
Immunogen:	A synthesized peptide derived from human Mad2L2
Formulation:	Rabbit IgG in phosphate buffered saline , pH 7.4, 150mM NaCl, 0.02% sodium azide and 50% glycerol.
Concentration:	lot specific
Purification:	Affinity Chromatography
Conjugation:	Unconjugated
Storage:	Store at 4°C short term. Aliquot and store at -20°C long term. Avoid freeze/thaw cycles.
Stability:	1 year
Predicted Protein Size:	24kDa
Gene Name:	MAD2 mitotic arrest deficient-like 2 (yeast)
Database Link:	<a href="#">Entrez Gene 10459 Human Q9UI95</a>
Background:	Swiss-Prot Acc.Q9UI95.Adapter protein able to interact with different proteins and involved in different biological processes. Mediates the interaction between the error-prone DNA polymerase zeta catalytic subunit REV3L and the inserter polymerase REV1, thereby mediating the second polymerase switching in translesion DNA synthesis.
Synonyms:	hREV7; MAD2B; OTTHUMP00000002273; REV7



[View online »](#)

## Product images:



Western blot analysis of Mad2L2 in HeLa lysates using MAD2L2 antibody.