

Product datasheet for **TA384690**

MACROH2A1 Rabbit Polyclonal Antibody

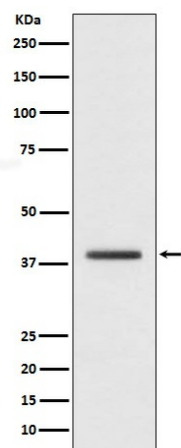
Product data:

Product Type:	Primary Antibodies
Applications:	IF, IHC, WB
Recommended Dilution:	WB: 1/1000-1/5000 IHC: 1/50-1/200 ICC/IF: 1/50-1/200
Reactivity:	Human, Mouse, Rat
Host:	Rabbit
Isotype:	IgG
Clonality:	Polyclonal
Immunogen:	A synthesized peptide derived from human macroH2A.1
Formulation:	Rabbit IgG in phosphate buffered saline , pH 7.4, 150mM NaCl, 0.02% sodium azide and 50% glycerol.
Concentration:	lot specific
Purification:	Affinity Chromatography
Conjugation:	Unconjugated
Storage:	Store at 4°C short term. Aliquot and store at -20°C long term. Avoid freeze/thaw cycles.
Stability:	1 year
Predicted Protein Size:	40kDa
Gene Name:	H2A histone family member Y
Database Link:	Entrez Gene 9555 Human O75367
Background:	Swiss-Prot Acc.O75367.Involved in stable X chromosome inactivation. Inhibits the binding of transcription factors and interferes with the activity of remodeling SWI/SNF complexes. Inhibits histone acetylation by EP300 and recruits class I HDACs, which induces an hypoacetylated state of chromatin.
Synonyms:	H2A.y; H2A/y; H2AF12M; H2AFJ; MACROH2A1; MACROH2A1.1; macroH2A1.2; mH2A1



[View online »](#)

Product images:



Western blot analysis of macroH2A.1 in HepG2 lysates using Macro H2A.1 antibody.