

## Product datasheet for **TA384688S**

### Lysozyme (LYZ) Rabbit Monoclonal Antibody [Clone ID: R09-9D6]

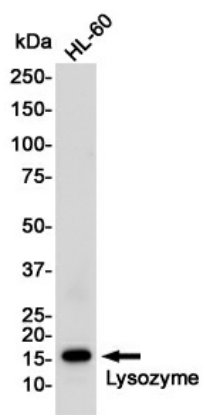
#### Product data:

Product Type:	Primary Antibodies
Clone Name:	R09-9D6
Applications:	IF, IP, WB
Recommended Dilution:	WB: 1/1000 ICC/IF: 1/50 IP: 1/20
Reactivity:	Human
Host:	Rabbit
Isotype:	IgG
Clonality:	Monoclonal
Immunogen:	A synthetic peptide of human Lysozyme
Formulation:	50mM Tris-Glycine(pH 7.4), 0.15M NaCl, 40% Glycerol, 0.01% Sodium azide and 0.05% BSA
Concentration:	lot specific
Purification:	Affinity Purified
Conjugation:	Unconjugated
Storage:	Store at 4°C short term. Aliquot and store at -20°C long term. Avoid freeze/thaw cycles.
Stability:	1 year
Predicted Protein Size:	Calculated MW: 17 kDa; Observed MW: 17 kDa
Gene Name:	lysozyme
Database Link:	<a href="#">Entrez Gene 4069 Human P61626</a>
Background:	Swiss-Prot Acc.P61626.Lysozymes have primarily a bacteriolytic function; those in tissues and body fluids are associated with the monocyte-macrophage system and enhance the activity of immunoagents.MiscellaneousLysozyme C is capable of both hydrolysis and transglycosylation; it shows also a slight esterase activity. It acts rapidly on both peptide-substituted and unsubstituted peptidoglycan, and slowly on chitin oligosaccharides.
Synonyms:	lysozyme; LZM

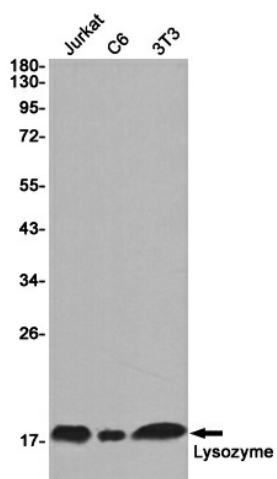


[View online »](#)

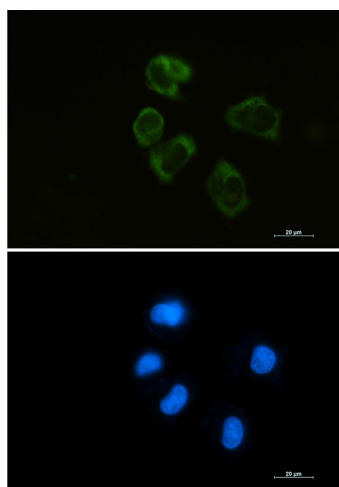
Product images:



Western blot analysis of Lysozyme in HL-60 lysates using Lysozyme antibody.



Western blot analysis of Lysozyme in Jurkat, C6, 3T3 lysates using Lysozyme antibody



Immunocytochemistry analysis of Lysozyme (green) in HEPG2 using Lysozyme antibody, and DAPI(blue).