

Product datasheet for TA384688M

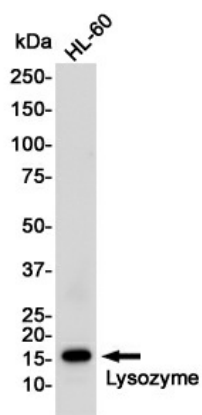
Lysozyme (LYZ) Rabbit Monoclonal Antibody [Clone ID: R09-9D6]

Product data:

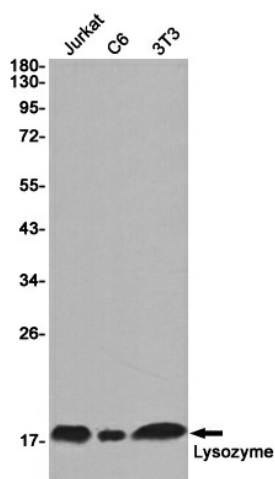
| | |
|-------------------------|---|
| Product Type: | Primary Antibodies |
| Clone Name: | R09-9D6 |
| Applications: | IF, IP, WB |
| Recommended Dilution: | WB: 1/1000 ICC/IF: 1/50 IP: 1/20 |
| Reactivity: | Human |
| Host: | Rabbit |
| Isotype: | IgG |
| Clonality: | Monoclonal |
| Immunogen: | A synthetic peptide of human Lysozyme |
| Formulation: | 50mM Tris-Glycine(pH 7.4), 0.15M NaCl, 40% Glycerol, 0.01% Sodium azide and 0.05% BSA |
| Concentration: | lot specific |
| Purification: | Affinity Purified |
| Conjugation: | Unconjugated |
| Storage: | Store at 4°C short term. Aliquot and store at -20°C long term. Avoid freeze/thaw cycles. |
| Stability: | 1 year |
| Predicted Protein Size: | Calculated MW: 17 kDa; Observed MW: 17 kDa |
| Gene Name: | lysozyme |
| Database Link: | Entrez Gene 4069 Human P61626 |
| Background: | Swiss-Prot Acc.P61626.Lysozymes have primarily a bacteriolytic function; those in tissues and body fluids are associated with the monocyte-macrophage system and enhance the activity of immunoagents.MiscellaneousLysozyme C is capable of both hydrolysis and transglycosylation; it shows also a slight esterase activity. It acts rapidly on both peptide-substituted and unsubstituted peptidoglycan, and slowly on chitin oligosaccharides. |
| Synonyms: | lysozyme; LZM |


[View online »](#)

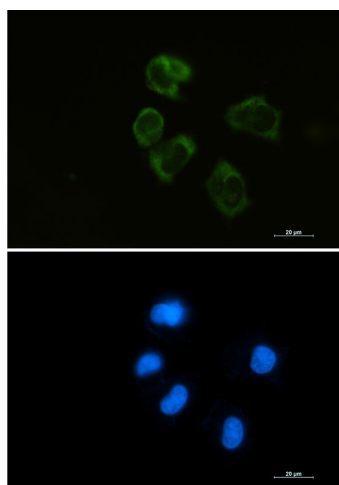
Product images:



Western blot analysis of Lysozyme in HL-60 lysates using Lysozyme antibody.



Western blot analysis of Lysozyme in Jurkat, C6, 3T3 lysates using Lysozyme antibody



Immunocytochemistry analysis of Lysozyme (green) in HEPG2 using Lysozyme antibody, and DAPI (blue).