

Product datasheet for **TA384687S**

Lysozyme (LYZ) Rabbit Polyclonal Antibody

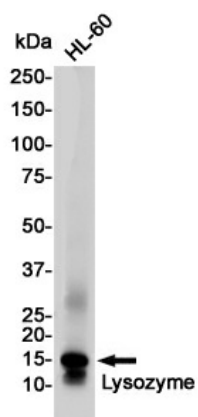
Product data:

Product Type:	Primary Antibodies
Applications:	IHC, WB
Recommended Dilution:	WB: 1/1000 IHC: 1/20
Reactivity:	Human
Host:	Rabbit
Isotype:	IgG
Clonality:	Polyclonal
Immunogen:	A synthetic peptide of human Lysozyme
Formulation:	50mM Tris-Glycine(pH 7.4), 0.15M NaCl, 40% Glycerol, 0.01% Sodium azide and 0.05% BSA
Concentration:	lot specific
Purification:	Affinity Purified
Conjugation:	Unconjugated
Storage:	Store at 4°C short term. Aliquot and store at -20°C long term. Avoid freeze/thaw cycles.
Stability:	1 year
Predicted Protein Size:	Calculated MW: 17 kDa; Observed MW: 17 kDa
Gene Name:	lysozyme
Database Link:	Entrez Gene 4069 Human P61626
Background:	Swiss-Prot Acc.P61626.
Synonyms:	lysozyme; LZM

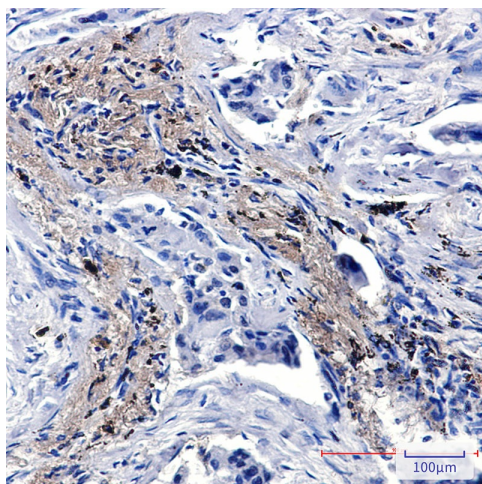


[View online »](#)

Product images:



Western blot analysis of Lysozyme in HL-60 lysates using Lysozyme antibody.



Immunohistochemistry analysis of paraffin-embedded Human lung cancer using Lysozyme antibody. High-pressure and temperature Sodium Citrate pH 6.0 was used for antigen retrieval.