

## Product datasheet for **TA384686**

### Lysozyme (LYZ) Rabbit Polyclonal Antibody

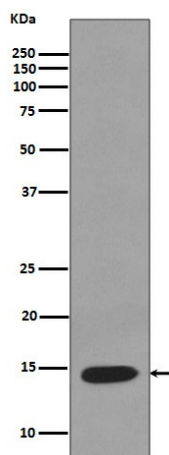
#### Product data:

Product Type:	Primary Antibodies
Applications:	IF, IHC, IP, WB
Recommended Dilution:	WB: 1/1000 IHC: 1/50-1/200 ICC/IF: 1/50-1/200 IP: 1/20
Reactivity:	Human, Mouse
Host:	Rabbit
Isotype:	IgG
Clonality:	Polyclonal
Immunogen:	A synthesized peptide derived from human Lysozyme
Formulation:	Rabbit IgG in phosphate buffered saline , pH 7.4, 150mM NaCl, 0.02% sodium azide and 50% glycerol.
Concentration:	lot specific
Purification:	Affinity Chromatography
Conjugation:	Unconjugated
Storage:	Store at 4°C short term. Aliquot and store at -20°C long term. Avoid freeze/thaw cycles.
Stability:	1 year
Predicted Protein Size:	17kDa
Gene Name:	lysozyme
Database Link:	<a href="#">Entrez Gene 4069 Human P61626</a>
Background:	Swiss-Prot Acc.P61626.Lysozymes have primarily a bacteriolytic function; those in tissues and body fluids are associated with the monocyte-macrophage system and enhance the activity of immunoagents.
Synonyms:	lysozyme; LZM

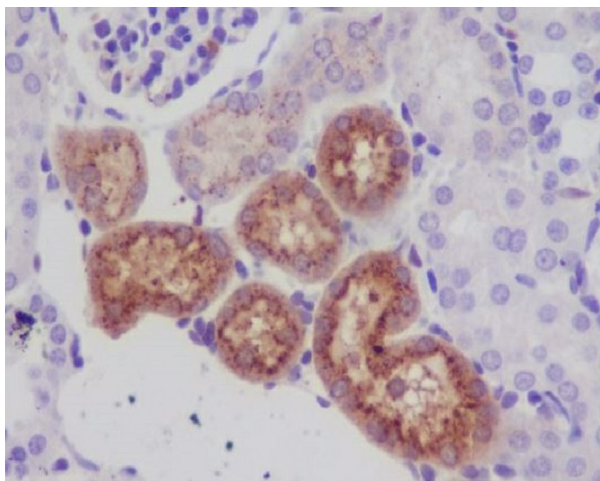


[View online »](#)

## Product images:



Western blot analysis of Lysozyme in K562 lysates; using Lysozyme antibody.



Immunohistochemistry analysis of paraffin-embedded mouse kidney using Lysozyme antibody. High-pressure and temperature Sodium Citrate pH 6.0 was used for antigen retrieval.