

## Product datasheet for **TA384685M**

### Lyve1 Rabbit Monoclonal Antibody [Clone ID: R03-3C1]

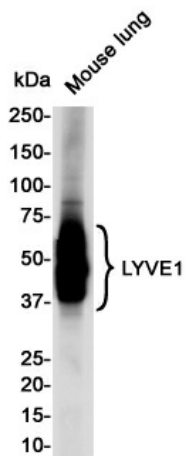
#### Product data:

Product Type:	Primary Antibodies
Clone Name:	R03-3C1
Applications:	IHC, IP, WB
Recommended Dilution:	WB: 1/1000 IHC: 1/200 IP: 1/20
Reactivity:	Human, Mouse
Host:	Rabbit
Isotype:	IgG
Clonality:	Monoclonal
Immunogen:	Recombinant protein of mouse LYVE1
Formulation:	50mM Tris-Glycine(pH 7.4), 0.15M NaCl, 40% Glycerol, 0.01% Sodium azide and 0.05% BSA
Concentration:	lot specific
Purification:	Affinity Purified
Conjugation:	Unconjugated
Storage:	Store at 4°C short term. Aliquot and store at -20°C long term. Avoid freeze/thaw cycles.
Stability:	1 year
Predicted Protein Size:	Calculated MW: 35 kDa; Observed MW: 35-70 kDa
Gene Name:	lymphatic vessel endothelial hyaluronan receptor 1
Database Link:	<a href="#">Entrez Gene 114332 Mouse</a> <a href="#">Q8BHC0</a>
Background:	Swiss-Prot Acc.Q8BHC0.Lymphatic vessel endothelial hyaluronic acid receptor 1
Synonyms:	CRSBP-1; CRSBP1; HAR; LYVE-1; XLKD1

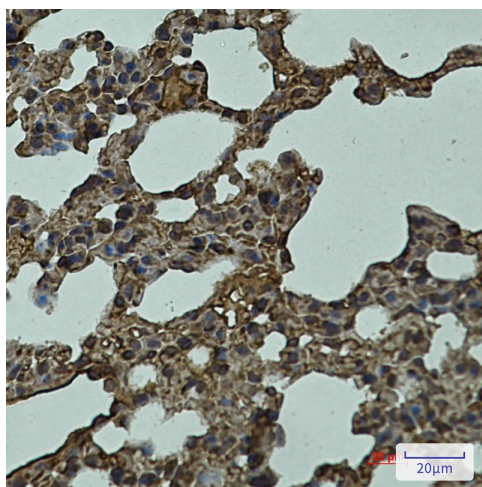


[View online »](#)

## Product images:



Western blot analysis of LYVE1 in mouse Lung lysates using LYVE1 antibody.



Immunohistochemistry analysis of paraffin-embedded mouse lung using LYVE1 antibody. High-pressure and temperature Sodium Citrate pH 6.0 was used for antigen retrieval.