

## Product datasheet for **TA384684**

### LYN Mouse Monoclonal Antibody [Clone ID: 1C8-H3-G6]

#### Product data:

Product Type:	Primary Antibodies
Clone Name:	1C8-H3-G6
Applications:	WB
Recommended Dilution:	WB: 1/1000
Reactivity:	Human
Host:	Mouse
Isotype:	IgG1
Clonality:	Monoclonal
Immunogen:	Purified recombinant human Lyn protein fragments expressed in E.coli.
Formulation:	Liquid in PBS containing 50% glycerol, 0.5% BSA and 0.03% Proclin 300, pH 7.3.
Concentration:	lot specific
Purification:	Affinity Purified
Conjugation:	Unconjugated
Storage:	Store at 4°C short term. Aliquot and store at -20°C long term. Avoid freeze/thaw cycles.
Stability:	1 year
Predicted Protein Size:	56/53kDa
Gene Name:	LYN proto-oncogene, Src family tyrosine kinase
Database Link:	<a href="#">Entrez Gene 4067 Human P07948</a>



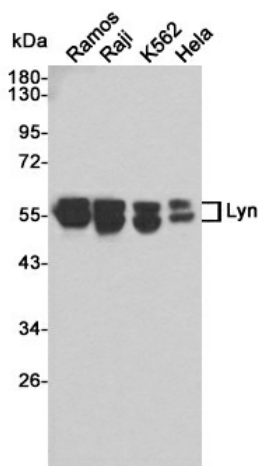
[View online »](#)

**Background:**

Swiss-Prot Acc.P07948.Down regulates expression of stem cell growth factor receptor (KIT). Acts as an effector of EpoR (erythropoietin receptor) in controlling KIT expression and may play a central role in erythroid differentiation during the switch between proliferation and maturation (By similarity). Acts as a positive regulator of cell movement while negatively regulating adhesion to stromal cells by inhibiting the ICAM-1-binding activity of beta-2 integrins. Acts as the mediator that relays suppressing signals from the chemokine receptor CXCR4 to beta-2 integrin LFA-1 in hematopoietic precursors. Involved in induction of stress-activated protein kinase (SAPK), but not ERK or p38 MAPK, in response to genotoxic agents. Induces SAPK by a MKK7- and MEKK1-dependent mechanism. The LYN -> MEKK1 -> MKK7 -> SAPK pathway is functional in the induction of apoptosis by genotoxic agents.

**Synonyms:**

FLJ26625; JTK8

**Product images:**

Western blot detection of Lyn in Ramos,Raji,K562 and HeLa cell lysates using Lyn mouse mAb(dilution 1:1000).Predicted band size:56/53kDa.Observed band size:56/53kDa.