

## Product datasheet for **TA384682S**

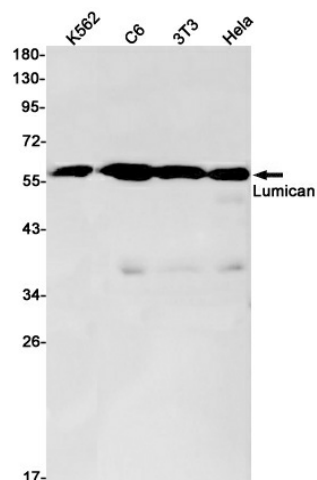
### Lumican (LUM) Rabbit Monoclonal Antibody [Clone ID: R02-7F6]

#### Product data:

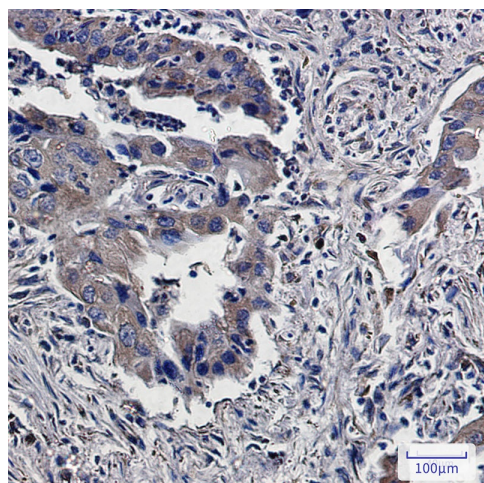
Product Type:	Primary Antibodies
Clone Name:	R02-7F6
Applications:	IF, IHC, WB
Recommended Dilution:	WB: 1/1000 IHC: 1/20 ICC/IF: 1/50-1/100
Reactivity:	Human, Mouse, Rat
Host:	Rabbit
Isotype:	IgG
Clonality:	Monoclonal
Immunogen:	A synthetic peptide of human Lumican
Formulation:	50mM Tris-Glycine(pH 7.4), 0.15M NaCl, 40% Glycerol, 0.01% Sodium azide and 0.05% BSA
Concentration:	lot specific
Purification:	Affinity Purified
Conjugation:	Unconjugated
Storage:	Store at 4°C short term. Aliquot and store at -20°C long term. Avoid freeze/thaw cycles.
Stability:	1 year
Predicted Protein Size:	Calculated MW: 38 kDa; Observed MW: 60 kDa
Gene Name:	lumican
Database Link:	<a href="#">Entrez Gene 4060 Human P51884</a>
Background:	Swiss-Prot Acc.P51884.Lumican
Synonyms:	LDC; lumican; SLRR2D



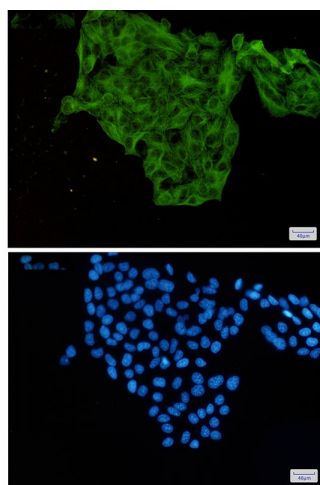
[View online »](#)

**Product images:**

Western blot analysis of Lumican in K562, C6, 3T3, HeLa lysates using Lumican antibody.



Immunohistochemistry analysis of paraffin-embedded Human lung cancer using Lumican antibody. High-pressure and temperature Sodium Citrate pH 6.0 was used for antigen retrieval.



Immunocytochemistry analysis of Lumican(green) in HeLa using Lumican antibody, and DAPI(blue)