

Product datasheet for **TA384680S**

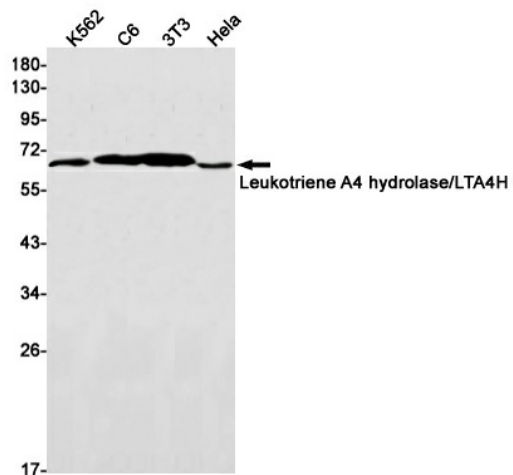
Leukotriene A4 hydrolase (LTA4H) Rabbit Monoclonal Antibody [Clone ID: R04-6H4]

Product data:

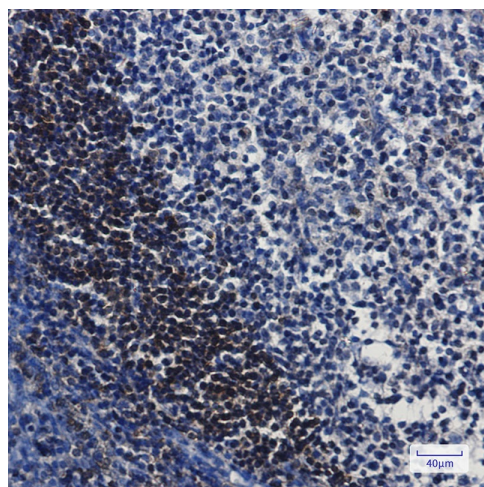
Product Type:	Primary Antibodies
Clone Name:	R04-6H4
Applications:	IHC, WB
Recommended Dilution:	WB: 1/2000-1/10000 IHC: 1/50-1/100
Reactivity:	Human, Mouse, Rat
Host:	Rabbit
Isotype:	IgG
Clonality:	Monoclonal
Immunogen:	A synthetic peptide of human Leukotriene A4 hydrolase
Formulation:	50mM Tris-Glycine(pH 7.4), 0.15M NaCl, 40% Glycerol, 0.01% Sodium azide and 0.05% BSA
Concentration:	lot specific
Purification:	Affinity Purified
Conjugation:	Unconjugated
Storage:	Store at 4°C short term. Aliquot and store at -20°C long term. Avoid freeze/thaw cycles.
Stability:	1 year
Predicted Protein Size:	Calculated MW: 69 kDa; Observed MW: 69 kDa
Gene Name:	leukotriene A4 hydrolase
Database Link:	Entrez Gene 4048 Human P09960
Background:	Swiss-Prot Acc.P09960.Epoxyde hydrolase that catalyzes the final step in the biosynthesis of the proinflammatory mediator leukotriene B4. Has also aminopeptidase activity.
Synonyms:	LTA4



[View online »](#)

Product images:

Western blot analysis of Leukotriene A4 hydrolase/LTA4H in K562, C6, 3T3, HeLa lysates using Leukotriene A4 Hydrolase antibody.



Immunohistochemistry analysis of paraffin-embedded Human tonsil using Leukotriene A4 hydrolase antibody. High-pressure and temperature Sodium Citrate pH 6.0 was used for antigen retrieval.