

Product datasheet for **TA384678S**

LRRC15 Rabbit Monoclonal Antibody [Clone ID: R04-3E9]

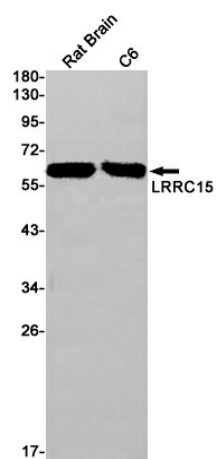
Product data:

Product Type:	Primary Antibodies
Clone Name:	R04-3E9
Applications:	WB
Recommended Dilution:	WB: 1/1000
Reactivity:	Mouse, Rat
Host:	Rabbit
Isotype:	IgG
Clonality:	Monoclonal
Immunogen:	A synthetic peptide of human LRRC15
Formulation:	50mM Tris-Glycine(pH 7.4), 0.15M NaCl, 40% Glycerol, 0.01% Sodium azide and 0.05% BSA
Concentration:	lot specific
Purification:	Affinity Purified
Conjugation:	Unconjugated
Storage:	Store at 4°C short term. Aliquot and store at -20°C long term. Avoid freeze/thaw cycles.
Stability:	1 year
Predicted Protein Size:	Calculated MW: 64 kDa; Observed MW: 64 kDa
Gene Name:	leucine rich repeat containing 15
Database Link:	Q8TF66
Background:	Swiss-Prot Acc.Q8TF66.Leucine-rich repeat-containing protein 15
Synonyms:	hLib; LIB; OTTHUMP00000209125



[View online »](#)

Product images:



Western blot analysis of LRRC15 in rat Brain, C6 lysates using LRRC15 antibody.