

## Product datasheet for **TA384677**

### ApoER2 (LRP8) Rabbit Polyclonal Antibody

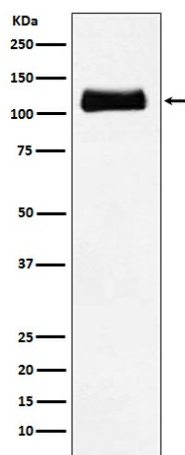
#### Product data:

Product Type:	Primary Antibodies
Applications:	IP, WB
Recommended Dilution:	WB: 1/500-1/2000 IP: 1/50
Reactivity:	Human, Mouse, Rat
Host:	Rabbit
Isotype:	IgG
Clonality:	Polyclonal
Immunogen:	A synthesized peptide derived from human ApoER2
Formulation:	Rabbit IgG in phosphate buffered saline , pH 7.4, 150mM NaCl, 0.02% sodium azide and 50% glycerol.
Concentration:	lot specific
Purification:	Affinity Chromatography
Conjugation:	Unconjugated
Storage:	Store at 4°C short term. Aliquot and store at -20°C long term. Avoid freeze/thaw cycles.
Stability:	1 year
Predicted Protein Size:	106kDa
Gene Name:	LDL receptor related protein 8
Database Link:	<a href="#">Entrez Gene 7804 Human Q14114</a>
Background:	Swiss-Prot Acc.Q14114.Cell surface receptor for Reelin (RELN) and apolipoprotein E (apoE)-containing ligands. LRP8 participates in transmitting the extracellular Reelin signal to intracellular signaling processes, by binding to DAB1 on its cytoplasmic tail.
Synonyms:	APOER2; HSZ75190; MCI1



[View online »](#)

## Product images:



Western blot analysis of ApoER2 in C6 lysates using ApoER2 antibody.