

## Product datasheet for **TA384676**

### LRP1 Rabbit Polyclonal Antibody

#### Product data:

Product Type:	Primary Antibodies
Applications:	FC, IF, IHC, IP, WB
Recommended Dilution:	WB: 1/10000-1/20000 IHC: 1/50-1/100 ICC/IF: 1/50-1/100 IP: 1/30 FC: 1/50
Reactivity:	Human, Mouse, Rat
Host:	Rabbit
Isotype:	IgG
Clonality:	Polyclonal
Immunogen:	A synthesized peptide derived from human LRP1
Formulation:	Rabbit IgG in phosphate buffered saline , pH 7.4, 150mM NaCl, 0.02% sodium azide and 50% glycerol.
Concentration:	lot specific
Purification:	Affinity Chromatography
Conjugation:	Unconjugated
Storage:	Store at 4°C short term. Aliquot and store at -20°C long term. Avoid freeze/thaw cycles.
Stability:	1 year
Predicted Protein Size:	85kDa
Gene Name:	LDL receptor related protein 1
Database Link:	<a href="#">Entrez Gene 4035 Human Q07954</a>



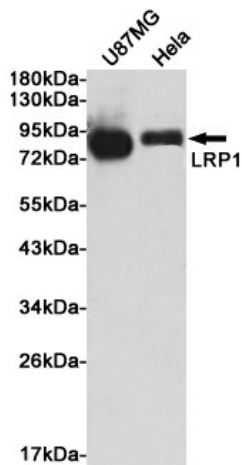
[View online »](#)

**Background:**

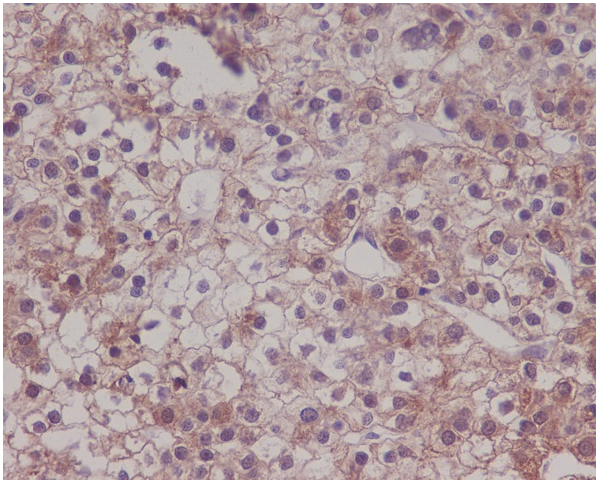
Swiss-Prot Acc.Q07954.Endocytic receptor involved in endocytosis and in phagocytosis of apoptotic cells. Required for early embryonic development. Involved in cellular lipid homeostasis. Involved in the plasma clearance of chylomicron remnants and activated LRPAP1 (alpha 2-macroglobulin), as well as the local metabolism of complexes between plasminogen activators and their endogenous inhibitors. May modulate cellular events, such as APP metabolism, kinase-dependent intracellular signaling, neuronal calcium signaling as well as neurotransmission.Functions as a receptor for Pseudomonas aeruginosa exotoxin A.

**Synonyms:**

A2MR; APOER; APR; CD91; FLJ16451; IGFBP3R; LRP; MGC88725; TGFBR5

**Product images:**

Western blot analysis of LRP1 in U87-MG and HeLa lysates using LRP1 antibody.



Immunohistochemistry analysis of paraffin-embedded Human liver carcinoma using LRP1 antibody.High-pressure and temperature Sodium Citrate pH 6.0 was used for antigen retrieval.