

Product datasheet for **TA384675S**

LPP Mouse Monoclonal Antibody [Clone ID: 6F6-C1-B6]

Product data:

Product Type:	Primary Antibodies
Clone Name:	6F6-C1-B6
Applications:	IF, IHC, IP, WB
Recommended Dilution:	WB: 1/500-1/2000 IHC: 1/200-1/1000 ICC: 1/200-1/1000 IP: 1/20
Reactivity:	Human, Mouse, Rat, Monkey, Hamster
Host:	Mouse
Isotype:	IgG1
Clonality:	Monoclonal
Immunogen:	Purified recombinant fragment of human LPP expressed in E. Coli.
Formulation:	Liquid in PBS containing 50% glycerol, 0.5% BSA and 0.03% Proclin 300, pH 7.3.
Concentration:	lot specific
Purification:	Ascitic Fluid
Conjugation:	Unconjugated
Storage:	Store at 4°C short term. Aliquot and store at -20°C long term. Avoid freeze/thaw cycles.
Stability:	1 year
Predicted Protein Size:	66kDa
Gene Name:	LIM domain containing preferred translocation partner in lipoma
Database Link:	Entrez Gene 4026 Human Q93052



[View online »](#)

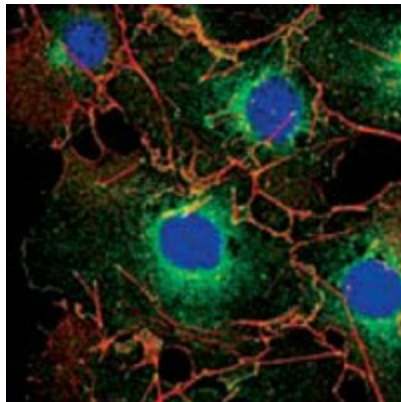
Background:

Swiss-Prot Acc.Q93052.LIM domain containing preferred translocation partner in lipoma. The Zyxin family of proteins contains five members, Ajuba, LIMD1, LPP,TRIP6 and Zyxin. LPP (LIM-containing lipoma-preferred partner), a LIM domain-containing scaffolding protein contains three LIM domains at its carboxyterminus, which are preceded by a proline-rich pre-LIM region containing a number of protein interaction domains. LPP, an 80 kDa protein, localizes to sites of cell adhesion, such as focal adhesions and cell-cell contacts,and shuttles to the nucleus where it has transcriptional activation capacity.The human LPP gene maps to chromosomal location 3q28, and preferentiallytranslocates to the HMGIC gene in a subclass of human benign mesenchymal tumors known as lipomas.

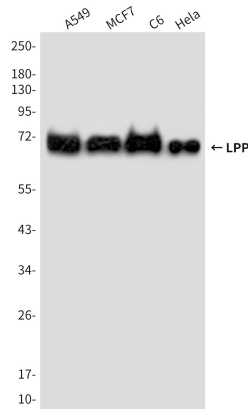
Synonyms:

LPP

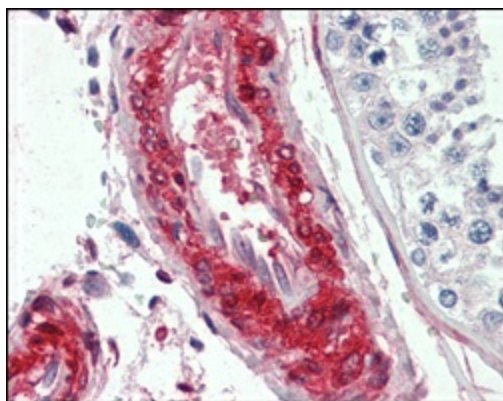
Product images:



Confocal immunofluorescence analysis of COS cells using LPP mouse mAb (green). Red: Actin filaments have been labeled using DY-554 phalloidin. Blue: DRAQ5 fluorescent DNA dye.



Western blot analysis of LPP in A549, MCF-7, C6 and HeLa lysates using LPP antibody.



Immunohistochemical analysis of paraffin-embedded human vessels tissues using LPP mouse mAb.