

Product datasheet for **TA384674**

Lipin 1 (LPIN1) Rabbit Polyclonal Antibody

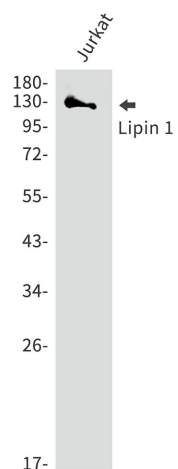
Product data:

Product Type:	Primary Antibodies
Applications:	FC, IF, IHC, IP, WB
Recommended Dilution:	WB: 1/1000-1/5000 IHC: 1/20-1/50 ICC/IF: 1/20-1/50 FC: 1/20 IP: 1/20
Reactivity:	Human
Host:	Rabbit
Isotype:	IgG
Clonality:	Polyclonal
Immunogen:	A synthetic peptide of human Lipin 1
Formulation:	50mM Tris-Glycine(pH 7.4), 0.15M NaCl, 40% Glycerol, 0.01% Sodium azide and 0.05% BSA
Concentration:	lot specific
Purification:	Affinity Purified
Conjugation:	Unconjugated
Storage:	Store at 4°C short term. Aliquot and store at -20°C long term. Avoid freeze/thaw cycles.
Stability:	1 year
Predicted Protein Size:	Calculated MW: 99 kDa; Observed MW: 130 kDa
Gene Name:	lipin 1
Database Link:	Entrez Gene 23175 Human Q14693
Background:	Swiss-Prot Acc.Q14693.
Synonyms:	DKFZp781P1796; KIAA0188; PAP1



[View online »](#)

Product images:



Western blot analysis of Lipin 1 in Jurkat lysates using Lipin 1 antibody.