

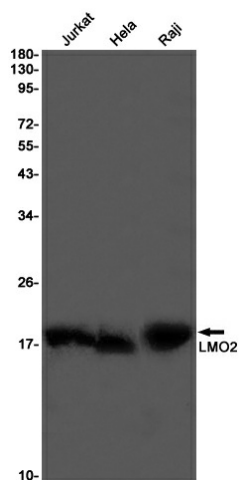
Product datasheet for **TA384672M**

LMO2 Rabbit Monoclonal Antibody [Clone ID: R06-5F6]

Product data:

Product Type:	Primary Antibodies
Clone Name:	R06-5F6
Applications:	IP, WB
Recommended Dilution:	WB: 1/1000-1/5000 IP: 1/20-1/100
Reactivity:	Human
Host:	Rabbit
Isotype:	IgG
Clonality:	Monoclonal
Immunogen:	A synthetic peptide of human LMO2
Formulation:	50mM Tris-Glycine(pH 7.4), 0.15M NaCl, 40% Glycerol, 0.01% Sodium azide and 0.05% BSA
Concentration:	lot specific
Purification:	Affinity Purified
Conjugation:	Unconjugated
Storage:	Store at 4°C short term. Aliquot and store at -20°C long term. Avoid freeze/thaw cycles.
Stability:	1 year
Predicted Protein Size:	Calculated MW: 18 kDa; Observed MW: 18 kDa
Gene Name:	LIM domain only 2
Database Link:	Entrez Gene 4005 Human P25791
Background:	Swiss-Prot Acc.P25791.Acts with TAL1/SCL to regulate red blood cell development. Also acts with LDB1 to maintain erythroid precursors in an immature state.
Synonyms:	RBTN2; RBTN1; RHOM2; TTG2

[View online »](#)

Product images:

Western blot analysis of LMO2 in Jurkat, HeLa, Raji lysates using LMO2 antibody.