

Product datasheet for **TA384671**

LMO2 Rabbit Polyclonal Antibody

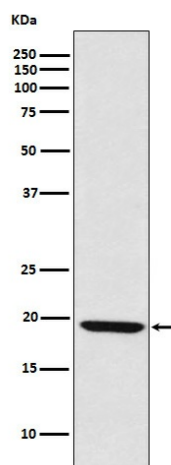
Product data:

Product Type:	Primary Antibodies
Applications:	FC, IP, WB
Recommended Dilution:	WB: 1/500-1/2000 IP: 1/100 FC: 1/100
Reactivity:	Human, Mouse, Rat
Host:	Rabbit
Isotype:	IgG
Clonality:	Polyclonal
Immunogen:	A synthesized peptide derived from human LMO2
Formulation:	Rabbit IgG in phosphate buffered saline , pH 7.4, 150mM NaCl, 0.02% sodium azide and 50% glycerol.
Concentration:	lot specific
Purification:	Affinity Chromatography
Conjugation:	Unconjugated
Storage:	Store at 4°C short term. Aliquot and store at -20°C long term. Avoid freeze/thaw cycles.
Stability:	1 year
Predicted Protein Size:	18kDa
Gene Name:	LIM domain only 2
Database Link:	Entrez Gene 4005 Human P25791
Background:	Swiss-Prot Acc.P25791.Acts with TAL1/SCL to regulate red blood cell development. Also acts with LDB1 to maintain erythroid precursors in an immature state.
Synonyms:	RBTN2; RBTNL1; RHOM2; TTG2



[View online »](#)

Product images:



Western blot analysis of LMO2 in Raji lysates using LMO2 antibody.