

## Product datasheet for **TA384670S**

### Lamin B2 (LMNB2) Rabbit Monoclonal Antibody [Clone ID: R02-2J2]

#### Product data:

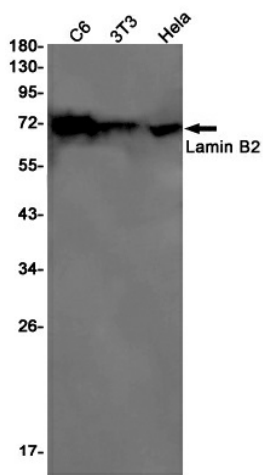
Product Type:	Primary Antibodies
Clone Name:	R02-2J2
Applications:	IF, IHC, IP, WB
Recommended Dilution:	WB: 1/1000 IHC: 1/20 ICC/IF: 1/50 IP: 1/20
Reactivity:	Human, Mouse, Rat
Host:	Rabbit
Isotype:	IgG
Clonality:	Monoclonal
Immunogen:	A synthetic peptide of human Lamin B2
Formulation:	50mM Tris-Glycine(pH 7.4), 0.15M NaCl, 40% Glycerol, 0.01% Sodium azide and 0.05% BSA
Concentration:	lot specific
Purification:	Affinity Purified
Conjugation:	Unconjugated
Storage:	Store at 4°C short term. Aliquot and store at -20°C long term. Avoid freeze/thaw cycles.
Stability:	1 year
Predicted Protein Size:	Calculated MW: 70 kDa; Observed MW: 70 kDa
Gene Name:	lamin B2
Database Link:	<a href="#">Entrez Gene 84823 Human Q03252</a>
Background:	Swiss-Prot Acc.Q03252.Lamins are components of the nuclear lamina, a fibrous layer on the nucleoplasmic side of the inner nuclear membrane, which is thought to provide a framework for the nuclear envelope and may also interact with chromatin.MiscellaneousThe structural integrity of the lamina is strictly controlled by the cell cycle, as seen by the disintegration and formation of the nuclear envelope in prophase and telophase, respectively.



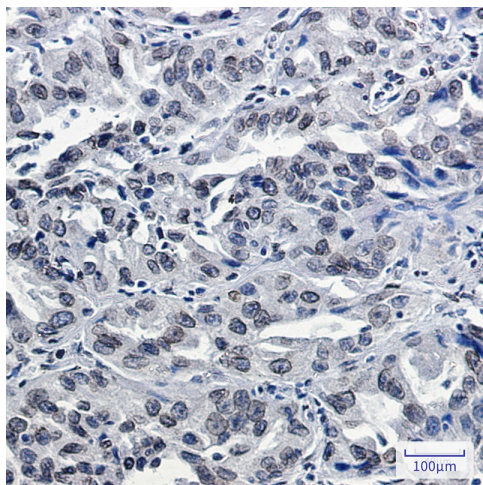
[View online »](#)

Synonyms: LAMB2; LMN2; MGC2721

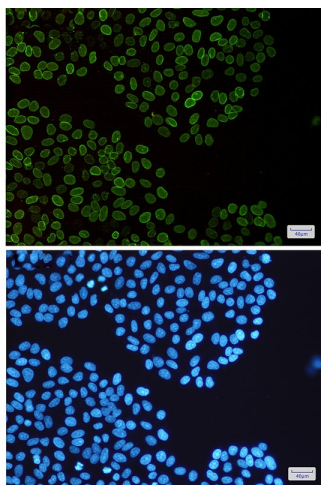
### Product images:



Western blot analysis of Lamin B2 in C6, 3T3, HeLa lysates using Lamin B2 antibody.



Immunohistochemistry analysis of paraffin-embedded Human lung cancer using Lamin B2 antibody. High-pressure and temperature Sodium Citrate pH 6.0 was used for antigen retrieval.



Immunocytochemistry analysis of Lamin B2(green) in HeLa using Lamin B2 antibody, and DAPI(blue)