

Product datasheet for **TA384668**

Hormone sensitive lipase (LIPE) Rabbit Polyclonal Antibody

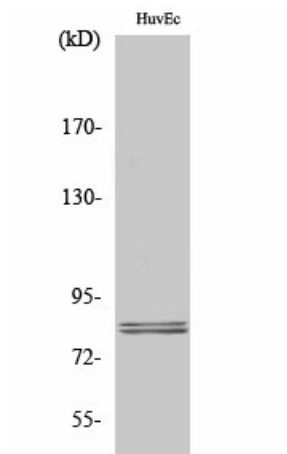
Product data:

Product Type:	Primary Antibodies
Applications:	ELISA, IHC, WB
Recommended Dilution:	WB: 1/500-1/2000 IHC: 1/100-1/300 ELISA: 1/5000
Reactivity:	Human, Mouse, Rat
Host:	Rabbit
Isotype:	IgG
Clonality:	Polyclonal
Immunogen:	The antiserum was produced against synthesized peptide derived from human HSL. AA range:518-567
Formulation:	Liquid in PBS containing 50% glycerol, 0.5% BSA and 0.02% sodium azide, pH 7.3.
Concentration:	lot specific
Purification:	Affinity Chromatography
Conjugation:	Unconjugated
Storage:	Store at 4°C short term. Aliquot and store at -20°C long term. Avoid freeze/thaw cycles.
Stability:	1 year
Predicted Protein Size:	Observed MW (kDa):120
Gene Name:	lipase E, hormone sensitive type
Database Link:	Entrez Gene 3991 Human Q05469
Background:	Swiss-Prot Acc.Q05469.In adipose tissue and heart, it primarily hydrolyzes stored triglycerides to free fatty acids, while in steroidogenic tissues, it principally converts cholesteryl esters to free cholesterol for steroid hormone production.
Synonyms:	HSL; LHS

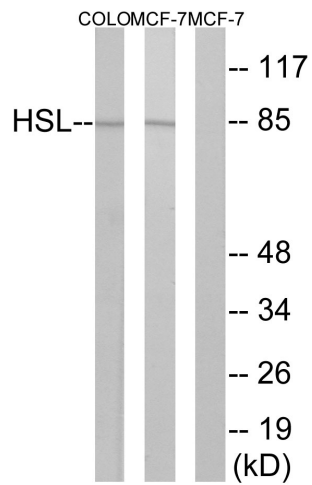


[View online »](#)

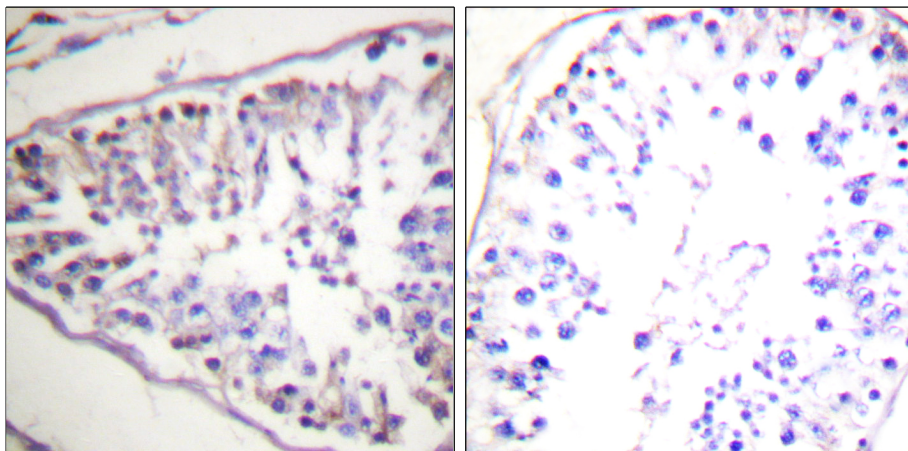
Product images:



Western blot analysis of Hormone Sensitive Lipase in various lysates using Hormone Sensitive Lipase antibody.



Western blot analysis of Hormone Sensitive Lipase in COLO and MCF-7 lysates using HSL antibody. The lane on the right is blocked with the synthesized peptide.



Immunohistochemistry analysis of paraffin-embedded Human tonsil tissue, using HSL antibody. High-pressure and temperature Sodium Citrate pH 6.0 was used for antigen retrieval. Sample with blocking peptide on the right.