

Product datasheet for **TA384667S**

Lin28 (LIN28A) Mouse Monoclonal Antibody [Clone ID: 9G2-5B6-1D1]

Product data:

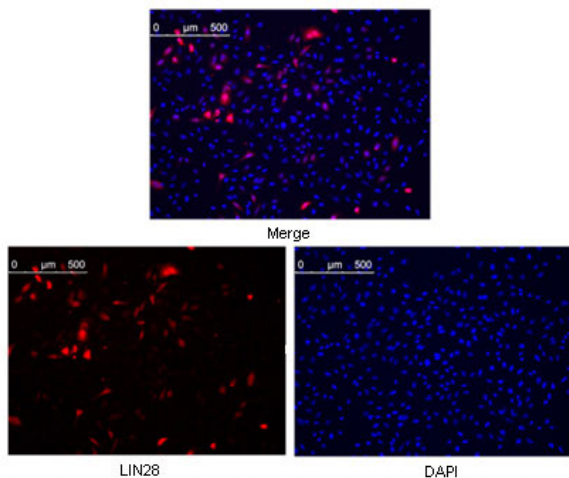
Product Type:	Primary Antibodies
Clone Name:	9G2-5B6-1D1
Applications:	IF, WB
Recommended Dilution:	WB: 1/500-1/2000 ICC: 1/200-1/1000
Reactivity:	Human
Host:	Mouse
Isotype:	IgG1
Clonality:	Monoclonal
Immunogen:	Purified recombinant fragment of LIN28 (aa93-209) expressed in E. Coli.
Formulation:	Liquid in PBS containing 50% glycerol, 0.5% BSA and 0.03% Proclin 300, pH 7.3.
Concentration:	lot specific
Purification:	Ascitic Fluid
Conjugation:	Unconjugated
Storage:	Store at 4°C short term. Aliquot and store at -20°C long term. Avoid freeze/thaw cycles.
Stability:	1 year
Predicted Protein Size:	23kDa
Gene Name:	lin-28 homolog A
Database Link:	Entrez Gene 79727 Human Q9H9Z2
Background:	Swiss-Prot Acc.Q9H9Z2.LIN28: lin-28 homolog (C. elegans), also known as CSDD1, ZCCHC1. Entrez Protein NP_078950. LIN28 was first discovered in the nematode C. elegans. It is a heterochronic protein in C. elegans involved in the timing of developmental events and choice of stage specific cell fates. LIN28 expression has been found to be regulated post-transcriptionally by miRNAs in both nematodes and mammals. In humans it is expressed in embryonic stem cells and its expression decreases during differentiation. It is negatively regulated by retinoic acid in neuronal differentiation.



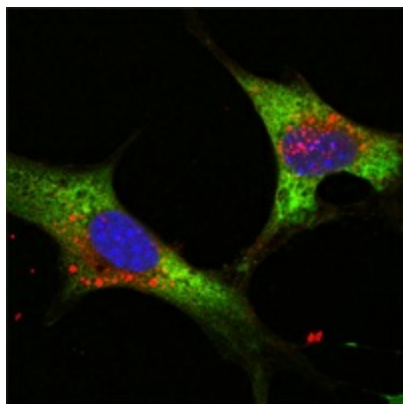
[View online »](#)

Synonyms: AL024421; ENSMUSG00000070700; Gm10299; Lin-28; lin-28A; Lin28; RGD1566408; Tex17

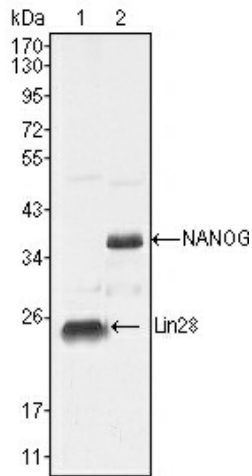
Product images:



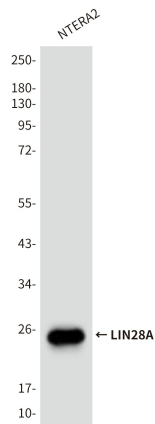
Confocal immunofluorescence analysis of methanol fixed HeLa cells were transfected with pMX construct of human LIN28, cells were analyzed ~62 hours after transfection.



Confocal immunofluorescence analysis of NTERA-2 cells using LIN28 mouse mAb (green). Blue: DRAQ5 fluorescent DNA dye.



Western blot analysis using LIN28 mouse mAb against NTERA-2 cell lysate (1).



Western blot analysis of LIN28A (9G2) in NTERA-2 lysates using LIN28A (9G2) antibody.