

## Product datasheet for **TA384661**

### **LGALS14 Rabbit Monoclonal Antibody [Clone ID: R09-6C1]**

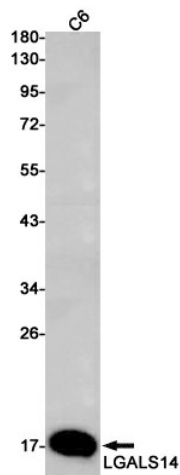
#### **Product data:**

Product Type:	Primary Antibodies
Clone Name:	R09-6C1
Applications:	IF, WB
Recommended Dilution:	WB: 1/1000 ICC/IF: 1/50
Reactivity:	Rat
Host:	Rabbit
Isotype:	IgG
Clonality:	Monoclonal
Immunogen:	A synthetic peptide of human LGALS14
Formulation:	50mM Tris-Glycine(pH 7.4), 0.15M NaCl, 40% Glycerol, 0.01% Sodium azide and 0.05% BSA
Concentration:	lot specific
Purification:	Affinity Purified
Conjugation:	Unconjugated
Storage:	Store at 4°C short term. Aliquot and store at -20°C long term. Avoid freeze/thaw cycles.
Stability:	1 year
Predicted Protein Size:	Calculated MW: 16 kDa; Observed MW: 16 kDa
Gene Name:	galectin 14
Database Link:	<a href="#">Q8TCE9</a>
Background:	Swiss-Prot Acc.Q8TCE9.Placental protein 13-like
Synonyms:	CLC2; Galectin-14; MGC22235; PPL13

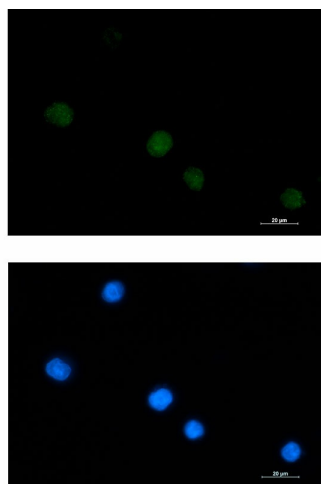


[View online »](#)

## Product images:



Western blot analysis of LGALS14 in C6 lysates using LGALS14 antibody.



Immunocytochemistry analysis of LGALS14 (green) in K562 using LGALS14 antibody, and DAPI (blue).