

## Product datasheet for TA384660M

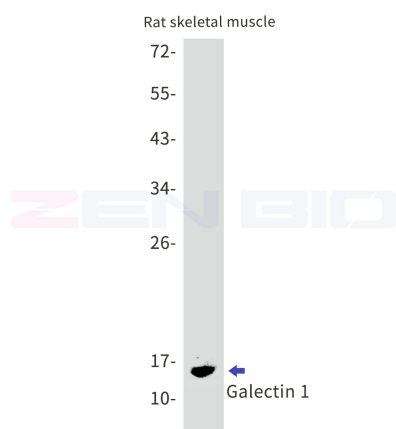
### Galectin 1 (LGALS1) Rabbit Monoclonal Antibody [Clone ID: R01-7A5]

#### Product data:

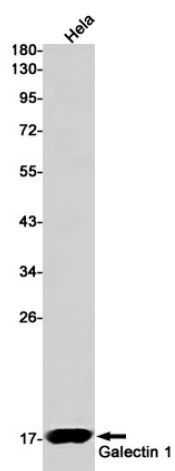
Product Type:	Primary Antibodies
Clone Name:	R01-7A5
Applications:	IHC, IP, WB
Recommended Dilution:	WB: 1/2000 IHC: 1/20 IP: 1/20
Reactivity:	Human, Rat
Host:	Rabbit
Isotype:	IgG
Clonality:	Monoclonal
Immunogen:	A synthetic peptide of human Galectin 1
Formulation:	50mM Tris-Glycine(pH 7.4), 0.15M NaCl, 40% Glycerol, 0.01% Sodium azide and 0.05% BSA
Concentration:	lot specific
Purification:	Affinity Purified
Conjugation:	Unconjugated
Storage:	Store at 4°C short term. Aliquot and store at -20°C long term. Avoid freeze/thaw cycles.
Stability:	1 year
Predicted Protein Size:	Calculated MW: 15 kDa; Observed MW: 15 kDa
Gene Name:	galectin 1
Database Link:	<a href="#">Entrez Gene 3956 Human P09382</a>
Background:	Swiss-Prot Acc.P09382.Lectin that binds beta-galactoside and a wide array of complex carbohydrates. Plays a role in regulating apoptosis, cell proliferation and cell differentiation. Inhibits CD45 protein phosphatase activity and therefore the dephosphorylation of Lyn kinase. Strong inducer of T-cell apoptosis.
Synonyms:	DKFZp686E23103; GAL1; galaptin; galectin-1; GBP; HBL; HPL


[View online »](#)

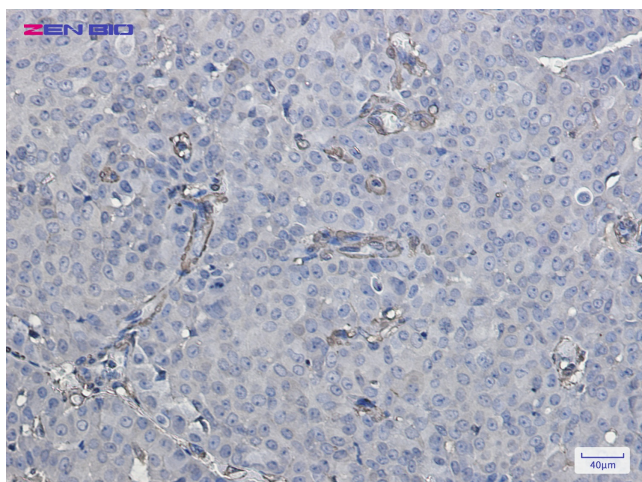
## Product images:



Western blot detection of Galectin 1 in Rat skeletal muscle lysates using Galectin 1 antibody. Predicted band size: 15kDa. Observed band size: 15kDa.



Western blot detection of Galectin 1 in HeLa cell lysates using Galectin 1 Rabbit mAb (1:1000 diluted). Predicted band size: 15kDa. Observed band size: 15kDa.



Immunohistochemistry of Galectin 1 in paraffin-embedded Human breast cancer tissue using Galectin 1 Rabbit mAb at dilution 1/20

