

## Product datasheet for **TA384659**

### Galectin 1 (LGALS1) Rabbit Polyclonal Antibody

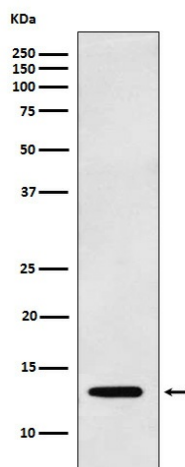
#### Product data:

Product Type:	Primary Antibodies
Applications:	IHC, IP, WB
Recommended Dilution:	WB: 1/500-1/2000 IHC: 1/50-1/200 IP: 1/50 FC: 1/60
Reactivity:	Human, Mouse, Rat
Host:	Rabbit
Isotype:	IgG
Clonality:	Polyclonal
Immunogen:	A synthesized peptide derived from human Galectin 1
Formulation:	Rabbit IgG in phosphate buffered saline , pH 7.4, 150mM NaCl, 0.02% sodium azide and 50% glycerol.
Concentration:	lot specific
Purification:	Affinity Chromatography
Conjugation:	Unconjugated
Storage:	Store at 4°C short term. Aliquot and store at -20°C long term. Avoid freeze/thaw cycles.
Stability:	1 year
Predicted Protein Size:	15kDa
Gene Name:	galectin 1
Database Link:	<a href="#">Entrez Gene 3956 Human P09382</a>
Background:	Swiss-Prot Acc.P09382.May regulate apoptosis, cell proliferation and cell differentiation. Binds beta-galactoside and a wide array of complex carbohydrates. Inhibits CD45 protein phosphatase activity and therefore the dephosphorylation of Lyn kinase.
Synonyms:	DKFZp686E23103; GAL1; galaptin; galectin-1; GBP; HBL; HPL



[View online »](#)

## Product images:



Western blot analysis of Galectin 1 in K562 lysates using Galectin 1 antibody.