

Product datasheet for **TA384655**

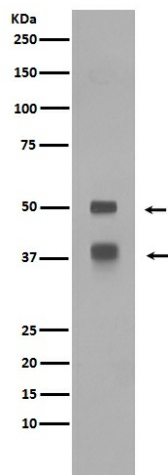
LEF1 Rabbit Polyclonal Antibody

Product data:

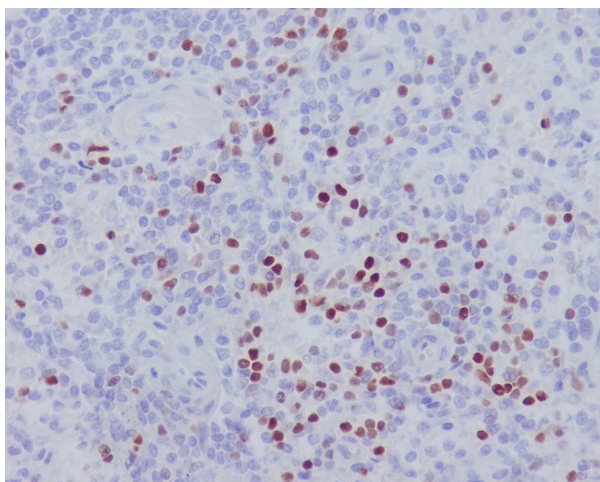
Product Type:	Primary Antibodies
Applications:	FC, IF, IHC, IP, WB
Recommended Dilution:	WB: 1/500-1/2000 IHC: 1/50-1/200 ICC/IF: 1/50-1/200
Reactivity:	Human, Mouse, Rat
Host:	Rabbit
Isotype:	IgG
Clonality:	Polyclonal
Immunogen:	A synthesized peptide derived from human LEF1
Formulation:	Rabbit IgG in phosphate buffered saline , pH 7.4, 150mM NaCl, 0.02% sodium azide and 50% glycerol.
Concentration:	lot specific
Purification:	Affinity Chromatography
Conjugation:	Unconjugated
Storage:	Store at 4°C short term. Aliquot and store at -20°C long term. Avoid freeze/thaw cycles.
Stability:	1 year
Predicted Protein Size:	44kDa
Gene Name:	lymphoid enhancer binding factor 1
Database Link:	Entrez Gene 51176 Human Q9UJU2
Background:	Swiss-Prot Acc.Q9UJU2.Participates in the Wnt signaling pathway. Activates transcription of target genes in the presence of CTNNB1 and EP300. May play a role in hair cell differentiation and follicle morphogenesis. TLE1, TLE2, TLE3 and TLE4 repress transactivation mediated by LEF1 and CTNNB1. Regulates T-cell receptor alpha enhancer function. Binds DNA in a sequence-specific manner. PIAG antagonizes both Wnt-dependent and Wnt-independent activation by LEF1 (By similarity).
Synonyms:	DKFZp586H0919; FLJ46390; LEF-1; TCF1-alpha; TCF1ALPHA



[View online »](#)

Product images:

Western blot analysis of LEF1 in Jurkat lysates using LEF1 antibody.



Immunohistochemistry analysis of paraffin-embedded Human spleen using LEF1 antibody. High-pressure and temperature Sodium Citrate pH 6.0 was used for antigen retrieval.