

## Product datasheet for **TA384654**

### LDHD Rabbit Polyclonal Antibody

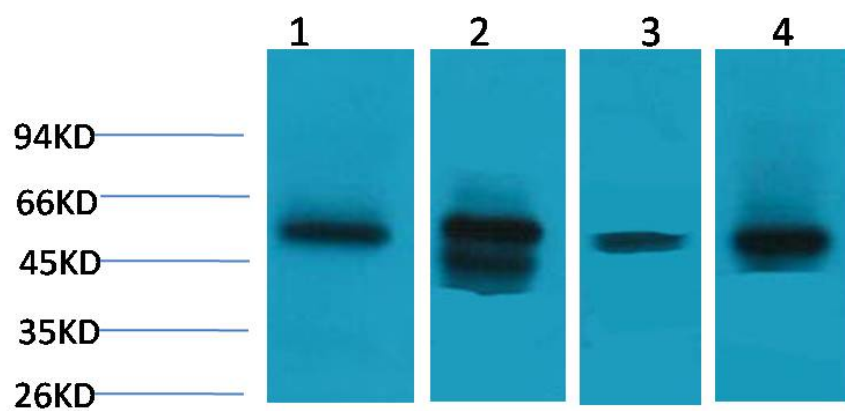
#### Product data:

Product Type:	Primary Antibodies
Applications:	WB
Recommended Dilution:	WB: 1/1000-5000
Reactivity:	Human, Mouse, Rat
Host:	Rabbit
Isotype:	IgG
Clonality:	Polyclonal
Immunogen:	Recombinant Protein of LDHD
Formulation:	Liquid in PBS containing 50% glycerol, 0.5% BSA and 0.02% sodium azide, pH 7.3.
Concentration:	lot specific
Purification:	Affinity Purified
Conjugation:	Unconjugated
Storage:	Store at 4°C short term. Aliquot and store at -20°C long term. Avoid freeze/thaw cycles.
Stability:	1 year
Predicted Protein Size:	Observed MW (kDa):55
Gene Name:	lactate dehydrogenase D
Database Link:	<a href="#">Entrez Gene 197257 Human Q85WU2</a>
Background:	Swiss-Prot Acc.Q85WU2.
Synonyms:	DLD; MGC57726



[View online »](#)

## Product images:



Western blot analysis of Lactate Dehydrogenase D in Hela, mouse Skeletal Muscle, mouse Liver, rat Kidney lysates using LDHD antibody.