

Product datasheet for **TA384653M**

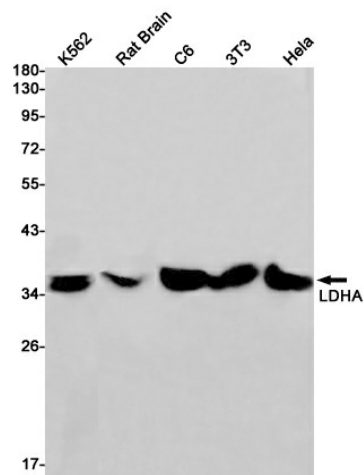
LDHA Rabbit Monoclonal Antibody [Clone ID: R06-6J2]

Product data:

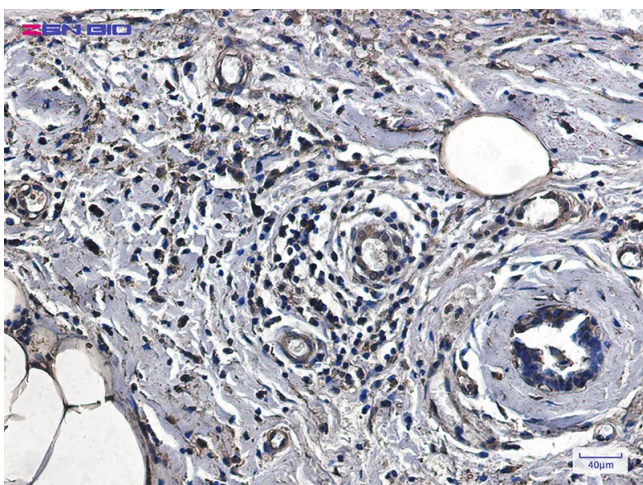
Product Type:	Primary Antibodies
Clone Name:	R06-6J2
Applications:	IF, IHC, IP, WB
Recommended Dilution:	WB: 1/1000 IHC: 1/50 ICC/IF: 1/50 IP: 1/20
Reactivity:	Human, Mouse, Rat
Host:	Rabbit
Isotype:	IgG
Clonality:	Monoclonal
Immunogen:	A synthetic peptide of human Lactate Dehydrogenase
Formulation:	50mM Tris-Glycine(pH 7.4), 0.15M NaCl, 40% Glycerol, 0.01% Sodium azide and 0.05% BSA
Concentration:	lot specific
Purification:	Affinity Purified
Conjugation:	Unconjugated
Storage:	Store at 4°C short term. Aliquot and store at -20°C long term. Avoid freeze/thaw cycles.
Stability:	1 year
Predicted Protein Size:	Calculated MW: 37 kDa; Observed MW: 37 kDa
Gene Name:	lactate dehydrogenase A
Database Link:	Entrez Gene 3939 Human P00338
Background:	Swiss-Prot Acc.P00338.L-lactate dehydrogenase A chain
Synonyms:	GSD11; LDH-A; LDH-M; LDH1; LDHM; PIG19

[View online »](#)

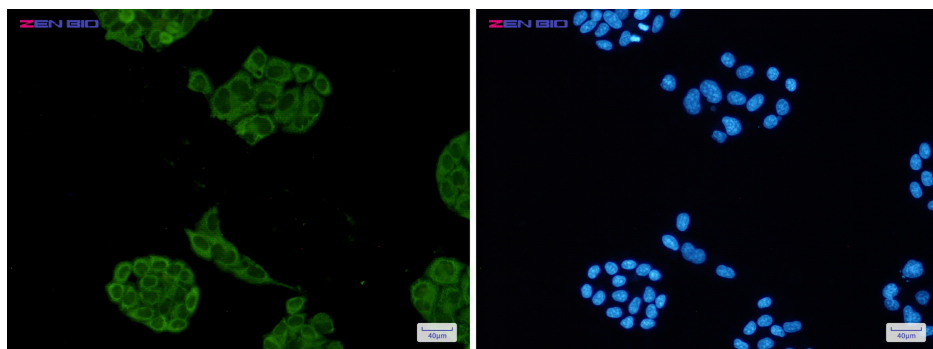
Product images:



Western blot detection of LDHA in K562, Rat Brain, C6, 3T3, HeLa cell lysates using LDHA Rabbit mAb (1:1000 diluted). Predicted band size: 37 kDa. Observed band size: 37 kDa.



Immunohistochemistry of Lactate Dehydrogenase in paraffin-embedded Human breast cancer tissue using Lactate Dehydrogenase Rabbit mAb at dilution 1/5



Immunocytochemistry of Lactate Dehydrogenase (green) in HeLa cells using Lactate Dehydrogenase Rabbit mAb at dilution 1/50, and DAPI (blue)