

Product datasheet for **TA384653**

LDHA Rabbit Monoclonal Antibody [Clone ID: R06-6J2]

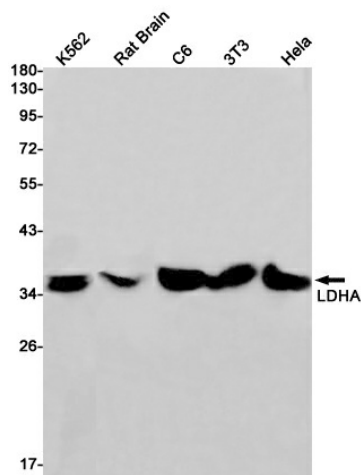
Product data:

| | |
|-------------------------|--|
| Product Type: | Primary Antibodies |
| Clone Name: | R06-6J2 |
| Applications: | IF, IHC, IP, WB |
| Recommended Dilution: | WB: 1/1000 IHC: 1/50 ICC/IF: 1/50 IP: 1/20 |
| Reactivity: | Human, Mouse, Rat |
| Host: | Rabbit |
| Isotype: | IgG |
| Clonality: | Monoclonal |
| Immunogen: | A synthetic peptide of human Lactate Dehydrogenase |
| Formulation: | 50mM Tris-Glycine(pH 7.4), 0.15M NaCl, 40% Glycerol, 0.01% Sodium azide and 0.05% BSA |
| Concentration: | lot specific |
| Purification: | Affinity Purified |
| Conjugation: | Unconjugated |
| Storage: | Store at 4°C short term. Aliquot and store at -20°C long term. Avoid freeze/thaw cycles. |
| Stability: | 1 year |
| Predicted Protein Size: | Calculated MW: 37 kDa; Observed MW: 37 kDa |
| Gene Name: | lactate dehydrogenase A |
| Database Link: | Entrez Gene 3939 Human P00338 |
| Background: | Swiss-Prot Acc.P00338.L-lactate dehydrogenase A chain |
| Synonyms: | GSD11; LDH-A; LDH-M; LDH1; LDHM; PIG19 |

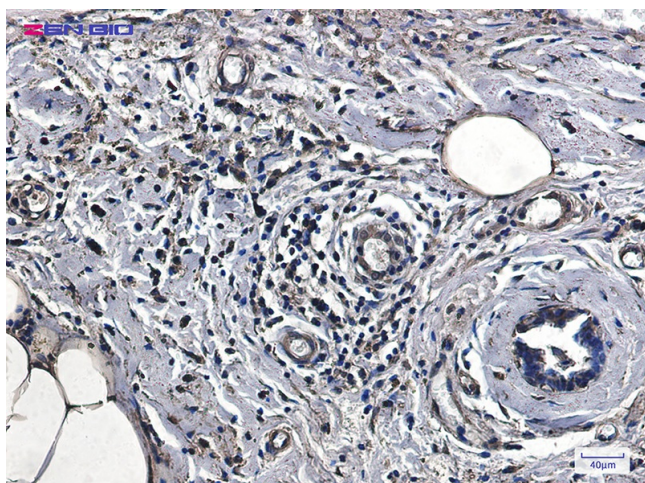


[View online »](#)

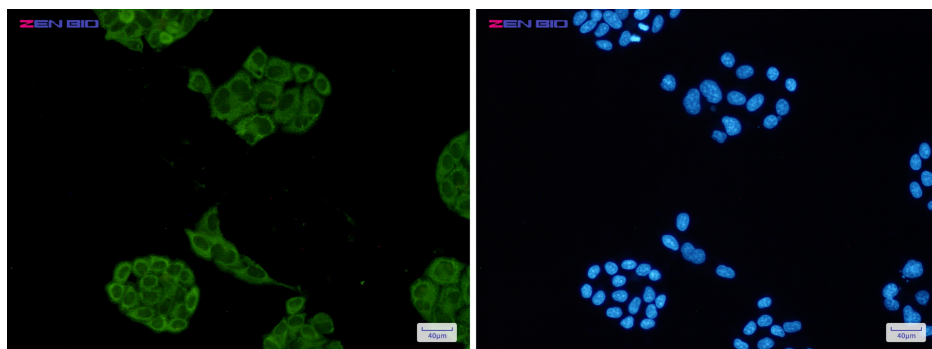
Product images:



Western blot detection of LDHA in K562,Rat Brain,C6,3T3,Hela cell lysates using LDHA Rabbit mAb(1:1000 diluted).Predicted band size:37kDa.Observed band size:37kDa.



Immunohistochemistry of Lactate Dehydrogenase in paraffin-embedded Human breast cancer tissue using Lactate Dehydrogenase Rabbit mAb at dilution 1/5



Immunocytochemistry of Lactate Dehydrogenase(green) in Hela cells using Lactate Dehydrogenase Rabbit mAb at dilution 1/50, and DAPI(blue)