

## Product datasheet for **TA384652S**

### LDHA Rabbit Monoclonal Antibody [Clone ID: R09-9A7]

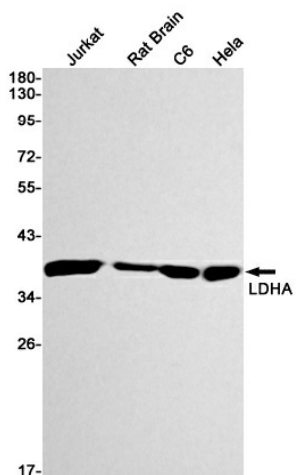
#### Product data:

Product Type:	Primary Antibodies
Clone Name:	R09-9A7
Applications:	IF, IHC, IP, WB
Recommended Dilution:	WB: 1/2000 IHC: 1/200 ICC/IF: 1/20 IP: 1/20
Reactivity:	Human, Rat
Host:	Rabbit
Isotype:	IgG
Clonality:	Monoclonal
Immunogen:	A synthetic peptide of human Lactate Dehydrogenase
Formulation:	50mM Tris-Glycine(pH 7.4), 0.15M NaCl, 40% Glycerol, 0.01% Sodium azide and 0.05% BSA
Concentration:	lot specific
Purification:	Affinity Purified
Conjugation:	Unconjugated
Storage:	Store at 4°C short term. Aliquot and store at -20°C long term. Avoid freeze/thaw cycles.
Stability:	1 year
Predicted Protein Size:	Calculated MW: 37 kDa; Observed MW: 37 kDa
Gene Name:	lactate dehydrogenase A
Database Link:	<a href="#">Entrez Gene 3939 Human P00338</a>
Background:	Swiss-Prot Acc.P00338.
Synonyms:	GSD11; LDH-A; LDH-M; LDH1; LDHM; PIG19



[View online »](#)

## Product images:



Western blot analysis of LDHA in Jurkat, rat Brain, C6, HeLa lysates using Lactate Dehydrogenase A antibody.