

Product datasheet for **TA384651M**

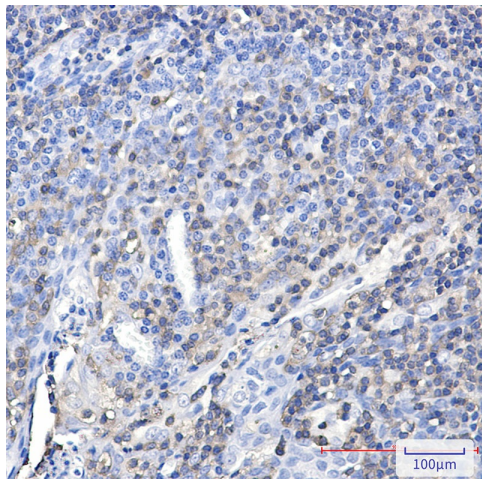
Plastin L (LCP1) Rabbit Polyclonal Antibody

Product data:

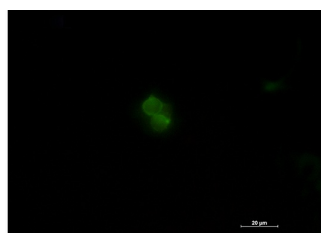
Product Type:	Primary Antibodies
Applications:	FC, IF, IHC, IP, WB
Recommended Dilution:	WB: 1/2000 IHC: 1/50 ICC/IF: 1/100 FC: 1/20 IP: 1/20
Reactivity:	Human
Host:	Rabbit
Isotype:	IgG
Clonality:	Polyclonal
Immunogen:	A synthetic peptide of human Plastin L
Formulation:	50mM Tris-Glycine(pH 7.4), 0.15M NaCl, 40% Glycerol, 0.01% Sodium azide and 0.05% BSA
Concentration:	lot specific
Purification:	Affinity Purified
Conjugation:	Unconjugated
Storage:	Store at 4°C short term. Aliquot and store at -20°C long term. Avoid freeze/thaw cycles.
Stability:	1 year
Predicted Protein Size:	Calculated MW: 70 kDa; Observed MW: 70 kDa
Gene Name:	lymphocyte cytosolic protein 1
Database Link:	Entrez Gene 3936 Human P13796
Background:	Swiss-Prot Acc.P13796.
Synonyms:	CP64; DKFZp781A23186; FLJ25423; FLJ26114; FLJ39956; L-PLASTIN; LC64P; LCP-1; LPL; OTTHUMP00000018362; PLS2



[View online »](#)

Product images:


Immunohistochemistry analysis of paraffin-embedded Human tonsil using Plastin L antibody. High-pressure and temperature Sodium Citrate pH 6.0 was used for antigen retrieval.



Immunocytochemistry analysis of Plastin L (green) in Jurkat using Plastin L antibody, and DAPI (blue).