

## Product datasheet for **TA384650S**

### Lamin B Receptor (LBR) Rabbit Monoclonal Antibody [Clone ID: R04-5H4]

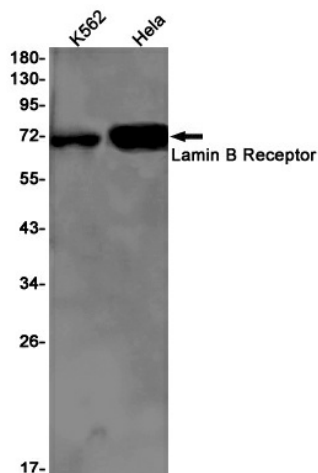
#### Product data:

Product Type:	Primary Antibodies
Clone Name:	R04-5H4
Applications:	IHC, IP, WB
Recommended Dilution:	WB: 1/1000 IHC: 1/20 IP: 1/20
Reactivity:	Human
Host:	Rabbit
Isotype:	IgG
Clonality:	Monoclonal
Immunogen:	A synthetic peptide of human Lamin B Receptor
Formulation:	50mM Tris-Glycine(pH 7.4), 0.15M NaCl, 40% Glycerol, 0.01% Sodium azide and 0.05% BSA
Concentration:	lot specific
Purification:	Affinity Purified
Conjugation:	Unconjugated
Storage:	Store at 4°C short term. Aliquot and store at -20°C long term. Avoid freeze/thaw cycles.
Stability:	1 year
Predicted Protein Size:	Calculated MW: 71 kDa; Observed MW: 71 kDa
Gene Name:	lamin B receptor
Database Link:	<a href="#">Entrez Gene 3930 Human Q14739</a>
Background:	Swiss-Prot Acc.Q14739.Anchors the lamina and the heterochromatin to the inner nuclear membrane.
Synonyms:	DHCR14B; FLJ43126; LMN2R; MGC9041; PHA

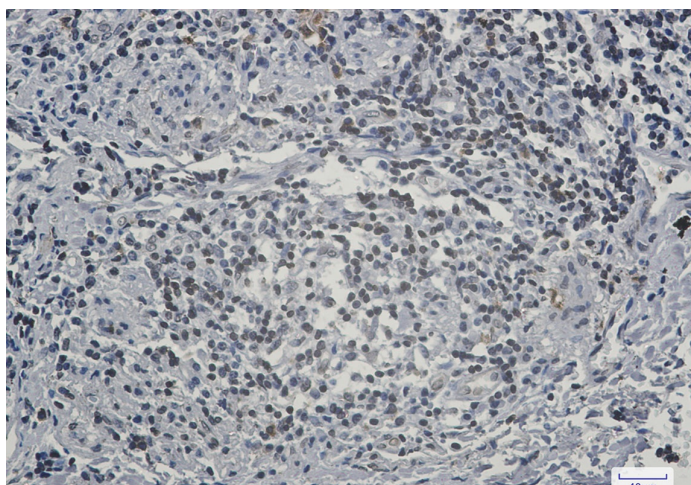


[View online »](#)

## Product images:



Western blot analysis of Lamin B Receptor in K562, HeLa lysates using Lamin B Receptor antibody.



Immunohistochemistry analysis of paraffin-embedded Human lung cancer using Lamin B Receptor antibody. High-pressure and temperature Sodium Citrate pH 6.0 was used for antigen retrieval.