

Product datasheet for **TA384645M**

LAT Rabbit Polyclonal Antibody

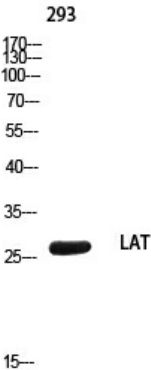
Product data:

Product Type:	Primary Antibodies
Applications:	ELISA, WB
Recommended Dilution:	WB: 1/500-1/2000 ELISA: 1/10000
Reactivity:	Human, Mouse, Rat
Host:	Rabbit
Isotype:	IgG
Clonality:	Polyclonal
Immunogen:	Synthesized peptide derived from LAT . at AA range: 190-270
Formulation:	Liquid in PBS containing 50% glycerol, 0.5% BSA and 0.02% sodium azide, pH 7.3.
Concentration:	lot specific
Purification:	Affinity Purified
Conjugation:	Unconjugated
Storage:	Store at 4°C short term. Aliquot and store at -20°C long term. Avoid freeze/thaw cycles.
Stability:	1 year
Predicted Protein Size:	Observed MW (kDa):27
Gene Name:	linker for activation of T-cells
Database Link:	Entrez Gene 27040 Human O43561
Background:	Swiss-Prot Acc.O43561.
Synonyms:	LAT1; p36-38; pp36



[View online »](#)

Product images:



Western blot analysis of LAT in 293 lysates using LAT antibody.