

## Product datasheet for TA384642M

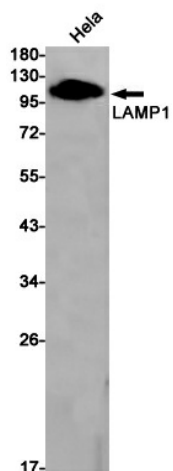
### LAMP1 Rabbit Monoclonal Antibody [Clone ID: R05-7D4]

#### Product data:

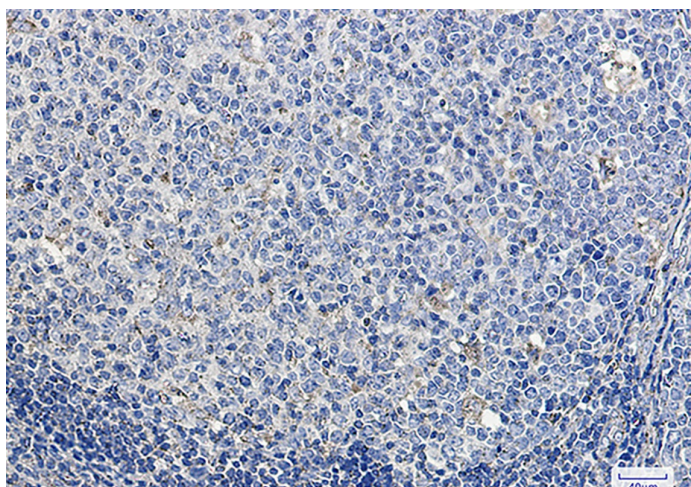
Product Type:	Primary Antibodies
Clone Name:	R05-7D4
Applications:	IHC, WB
Recommended Dilution:	WB: 1/1000 IHC: 1/50
Reactivity:	Human
Host:	Rabbit
Isotype:	IgG
Clonality:	Monoclonal
Immunogen:	A synthetic peptide of human LAMP1
Formulation:	50mM Tris-Glycine(pH 7.4), 0.15M NaCl, 40% Glycerol, 0.01% Sodium azide and 0.05% BSA
Concentration:	lot specific
Purification:	Affinity Purified
Conjugation:	Unconjugated
Storage:	Store at 4°C short term. Aliquot and store at -20°C long term. Avoid freeze/thaw cycles.
Stability:	1 year
Predicted Protein Size:	Calculated MW: 45 kDa; Observed MW: 90-120 kDa
Gene Name:	lysosomal associated membrane protein 1
Database Link:	<a href="#">Entrez Gene 3916 Human P11279</a>
Background:	Swiss-Prot Acc.P11279.Presents carbohydrate ligands to selectins. Also implicated in tumor cell metastasis.Acts as a receptor for Lassa virus protein.
Synonyms:	CD107a; LAMP-1; LAMPA; LGP120


[View online »](#)

## Product images:



Western blot analysis of LAMP1 in HeLa lysates using LAMP1 antibody.



Immunohistochemistry analysis of paraffin-embedded Human tonsil using LAMP1 antibody. High-pressure and temperature Sodium Citrate pH 6.0 was used for antigen retrieval.