

## Product datasheet for **TA384639**

### LAMA5 Rabbit Polyclonal Antibody

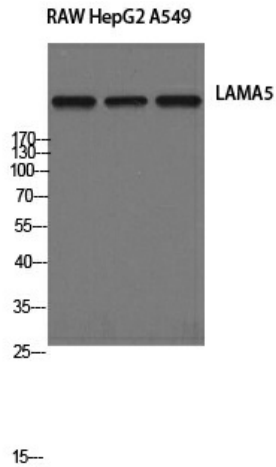
#### Product data:

Product Type:	Primary Antibodies
Applications:	ELISA, IHC, WB
Recommended Dilution:	WB: 1/500-1/2000 IHC: 1/100-1/300 ELISA: 1/20000
Reactivity:	Human, Mouse
Host:	Rabbit
Isotype:	IgG
Clonality:	Polyclonal
Immunogen:	The antiserum was produced against synthesized peptide derived from human LAMA5. AA range:2381-2430
Formulation:	Liquid in PBS containing 50% glycerol, 0.5% BSA and 0.02% sodium azide, pH 7.3.
Concentration:	lot specific
Purification:	Affinity Chromatography
Conjugation:	Unconjugated
Storage:	Store at 4°C short term. Aliquot and store at -20°C long term. Avoid freeze/thaw cycles.
Stability:	1 year
Predicted Protein Size:	Observed MW (kDa):400
Database Link:	<a href="#">O15230</a>
Background:	Swiss-Prot Acc.O15230.Binding to cells via a high affinity receptor, laminin is thought to mediate the attachment, migration and organization of cells into tissues during embryonic development by interacting with other extracellular matrix components.

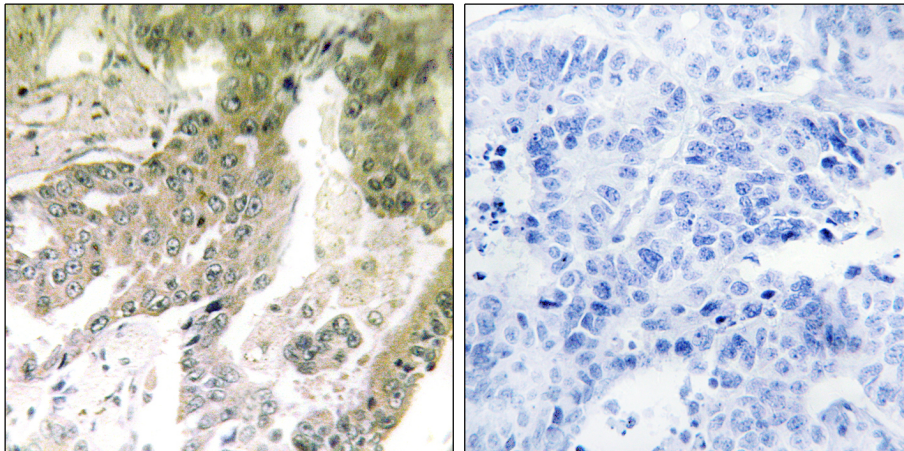


[View online »](#)

Product images:



Western blot analysis of Laminin alpha 5 in RAW, HepG2, A549 lysates using Laminin alpha 5 antibody.



Immunohistochemistry analysis of paraffin-embedded Human lung carcinoma tissue, using LAMA5 antibody. High-pressure and temperature Sodium Citrate pH 6.0 was used for antigen retrieval. Sample with blocking peptide on the right.