

## Product datasheet for **TA384638**

### alpha Lactalbumin (LALBA) Mouse Monoclonal Antibody [Clone ID: 10B3-6A7-7A8]

#### Product data:

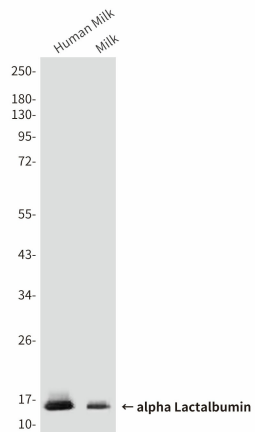
Product Type:	Primary Antibodies
Clone Name:	10B3-6A7-7A8
Applications:	IF, IHC, WB
Recommended Dilution:	WB: 1/1000 IF: 1/200 IHC: 1/50-300
Reactivity:	Human
Host:	Mouse
Isotype:	IgG1
Clonality:	Monoclonal
Immunogen:	Synthetic Peptide of alpha Lactalbumin
Formulation:	Liquid in PBS containing 50% glycerol, 0.5% BSA and 0.03% Proclin 300, pH 7.3.
Concentration:	lot specific
Purification:	Affinity Purified
Conjugation:	Unconjugated
Storage:	Store at 4°C short term. Aliquot and store at -20°C long term. Avoid freeze/thaw cycles.
Stability:	1 year
Predicted Protein Size:	Observed MW (kDa):16
Gene Name:	lactalbumin alpha
Database Link:	<a href="#">Entrez Gene 3906 Human P00709</a>
Background:	Swiss-Prot Acc.P00709.Regulatory subunit of lactose synthase, changes the substrate specificity of galactosyltransferase in the mammary gland making glucose a good acceptor substrate for this enzyme. This enables LS to synthesize lactose, the major carbohydrate component of milk. In other tissues, galactosyltransferase transfers galactose onto the N-acetylglucosamine of the oligosaccharide chains in glycoproteins.RegionsFeature keyPosition(s)Description



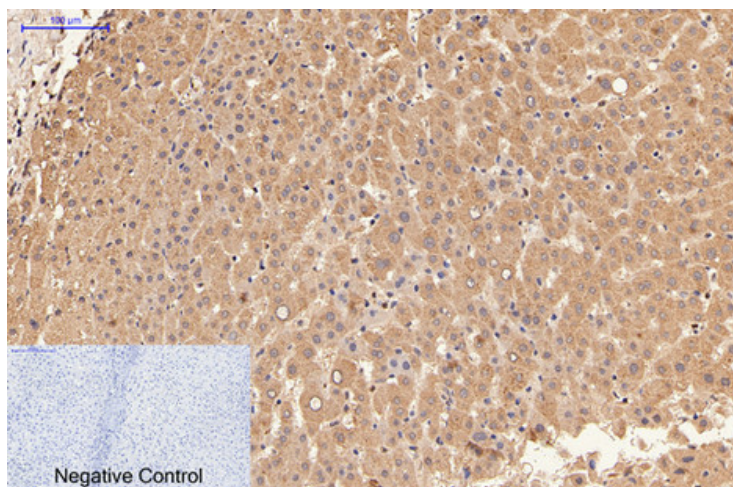
[View online »](#)

Synonyms: LYZL7; MGC138521; MGC138523

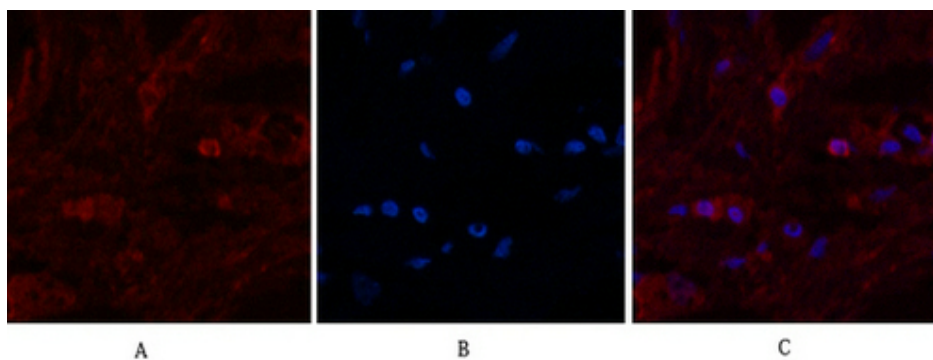
**Product images:**



Western blot analysis of alpha Lactalbumin (10B3) in Human Milk, Milk, lysates using alpha Lactalbumin (10B3) antibody



Immunohistochemistry analysis of paraffin-embedded Human liver tissue using alpha Lactalbumin (10B3) antibody. High-pressure and temperature Sodium Citrate pH 6.0 was used for antigen retrieval. Negative control was used by secondary antibody only.



Immunofluorescence analysis of alpha Lactalbumin (10B3) in Human breast tissue using alpha Lactalbumin antibody (red), and DAPI (blue).