

## Product datasheet for **TA384637S**

### **L1RE1 Rabbit Monoclonal Antibody [Clone ID: R02-2H1]**

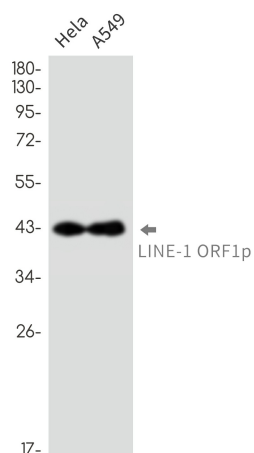
#### **Product data:**

Product Type:	Primary Antibodies
Clone Name:	R02-2H1
Applications:	IP, WB
Recommended Dilution:	WB: 1/1000 IP: 1/20
Reactivity:	Human
Host:	Rabbit
Isotype:	IgG
Clonality:	Monoclonal
Immunogen:	Recombinant protein of human LINE-1 ORF1p
Formulation:	50mM Tris-Glycine(pH 7.4), 0.15M NaCl, 40% Glycerol, 0.01% Sodium azide and 0.05% BSA
Concentration:	lot specific
Purification:	Affinity Purified
Conjugation:	Unconjugated
Storage:	Store at 4°C short term. Aliquot and store at -20°C long term. Avoid freeze/thaw cycles.
Stability:	1 year
Predicted Protein Size:	Calculated MW:40 kDa,Observed MW:42 kDa
Gene Name:	LINE1 retrotransposable element 1
Database Link:	<a href="#">Q15605</a>



[View online »](#)

## Product images:



Western blot analysis of LINE1 ORF1p in HeLa, A549 lysates using LINE 1 ORF1p antibody.