

## Product datasheet for **TA384636**

### Cytokeratin 9 (KRT9) Rabbit Polyclonal Antibody

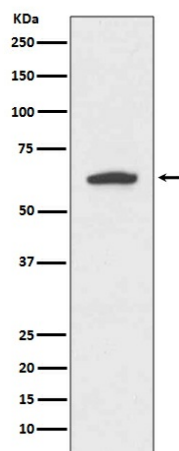
#### Product data:

Product Type:	Primary Antibodies
Applications:	IHC, IP, WB
Recommended Dilution:	WB: 1/1000-1/2000 IHC: 1/50-1/200 IP: 1/50
Reactivity:	Human, Mouse, Rat
Host:	Rabbit
Isotype:	IgG
Clonality:	Polyclonal
Immunogen:	A synthesized peptide derived from human Cytokeratin 9
Formulation:	Rabbit IgG in phosphate buffered saline , pH 7.4, 150mM NaCl, 0.02% sodium azide and 50% glycerol.
Concentration:	lot specific
Purification:	Affinity Chromatography
Conjugation:	Unconjugated
Storage:	Store at 4°C short term. Aliquot and store at -20°C long term. Avoid freeze/thaw cycles.
Stability:	1 year
Predicted Protein Size:	62kDa
Gene Name:	keratin 9
Database Link:	<a href="#">Entrez Gene 3857 Human P35527</a>
Background:	Swiss-Prot Acc.P35527.May serve an important special function either in the mature palmar and plantar skin tissue or in the morphogenetic program of the formation of these tissues. Plays a role in keratin filament assembly.
Synonyms:	CK-9; Cytokeratin-9; EPPK; K9; Keratin-9



[View online »](#)

## Product images:



Western blot analysis of Cytokeratin 9 in HeLa lysates using Cytokeratin 9 antibody.