

## Product datasheet for **TA384635S**

### Cytokeratin 8 (KRT8) Rabbit Monoclonal Antibody [Clone ID: R03-1B3]

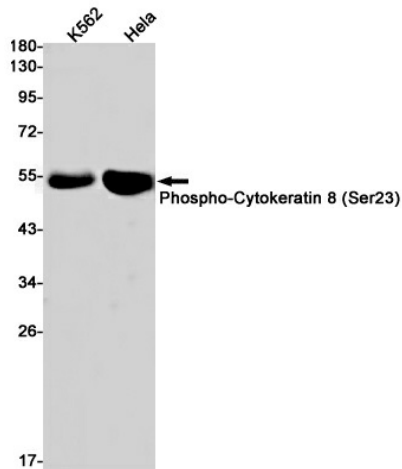
#### Product data:

Product Type:	Primary Antibodies
Clone Name:	R03-1B3
Applications:	IF, IHC, IP, WB
Recommended Dilution:	WB: 1/2000-1/10000 IHC: 1/20 ICC/IF: 1/20 IP: 1/20
Reactivity:	Human
Host:	Rabbit
Isotype:	IgG
Clonality:	Monoclonal
Immunogen:	A synthetic phosphopeptide corresponding to residues surrounding Ser23 of human Cytokeratin 8 (Phosphorylated)
Formulation:	50mM Tris-Glycine(pH 7.4), 0.15M NaCl, 40% Glycerol, 0.01% Sodium azide and 0.05% BSA
Concentration:	lot specific
Purification:	Affinity Purified
Conjugation:	Unconjugated
Storage:	Store at 4°C short term. Aliquot and store at -20°C long term. Avoid freeze/thaw cycles.
Stability:	1 year
Predicted Protein Size:	Calculated MW: 54 kDa; Observed MW: 54 kDa
Gene Name:	keratin 8
Database Link:	<a href="#">Entrez Gene 3856 Human P05787</a>
Background:	Swiss-Prot Acc.P05787.Together with KRT19, helps to link the contractile apparatus to dystrophin at the costameres of striated muscle.
Synonyms:	CARD2; CK-8; CK8; CYK8; Cytokeratin-8; K2C8; K8; Keratin-8; KO

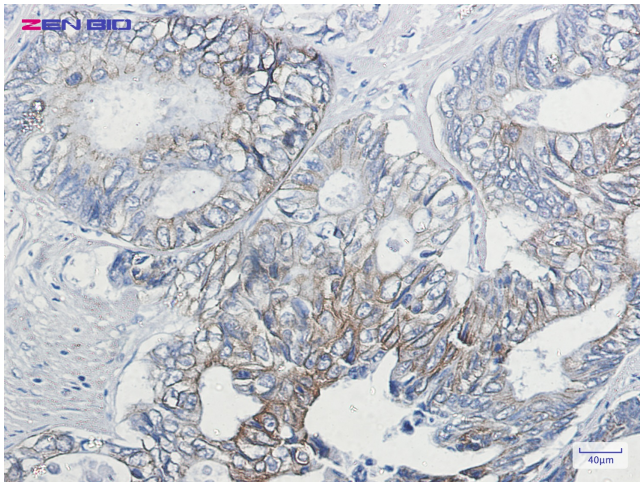


[View online »](#)

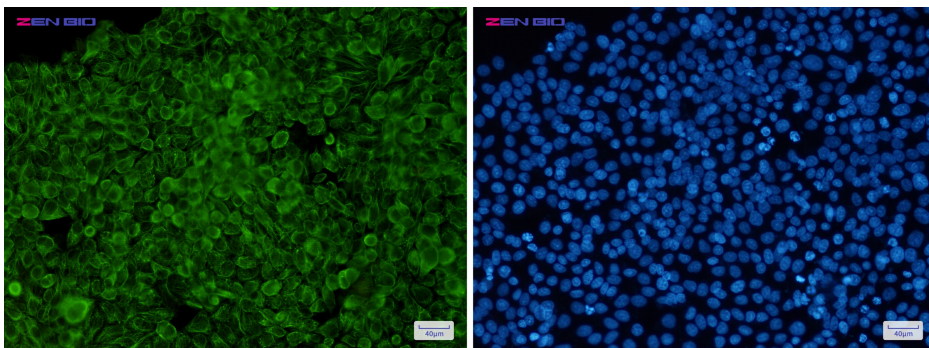
## Product images:



Western blot detection of Phospho-Cytokeratin 8 (Ser23) in K562, HeLa cell lysates using Phospho-Cytokeratin 8 (Ser23) Rabbit mAb (1:1000 diluted). Predicted band size: 54 kDa. Observed band size: 54 kDa.



Immunohistochemistry of Cytokeratin 8 (Phospho-Ser23) in paraffin-embedded Human colon cancer tissue using Cytokeratin 8 (Phospho-Ser23) Rabbit mAb at dilution 1/20



Immunocytochemistry of Cytokeratin 8 (Phospho-Ser23) (green) in HeLa cells using Cytokeratin 8 (Phospho-Ser23) Rabbit mAb at dilution 1/5, and DAPI (blue)