

Product datasheet for **TA384634M**

Cytokeratin 8 (KRT8) Rabbit Polyclonal Antibody

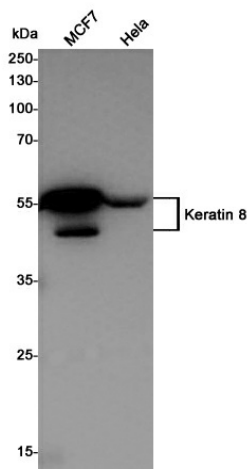
Product data:

Product Type:	Primary Antibodies
Applications:	FC, IF, IHC, IP, WB
Recommended Dilution:	WB: 1/1000 IHC: 1/20 ICC/IF: 1/20-1/100 FC: 1/20 IP: 1/20
Reactivity:	Human, Mouse
Host:	Rabbit
Isotype:	IgG
Clonality:	Polyclonal
Immunogen:	A synthetic peptide of human Cytokeratin 8
Formulation:	50mM Tris-Glycine(pH 7.4), 0.15M NaCl, 40% Glycerol, 0.01% Sodium azide and 0.05% BSA
Concentration:	lot specific
Purification:	Affinity Purified
Conjugation:	Unconjugated
Storage:	Store at 4°C short term. Aliquot and store at -20°C long term. Avoid freeze/thaw cycles.
Stability:	1 year
Predicted Protein Size:	Calculated MW: 54 kDa; Observed MW: 54 kDa
Gene Name:	keratin 8
Database Link:	Entrez Gene 3856 Human P05787
Background:	Swiss-Prot Acc.P05787.
Synonyms:	CARD2; CK-8; CK8; CYK8; Cytokeratin-8; K2C8; K8; Keratin-8; KO

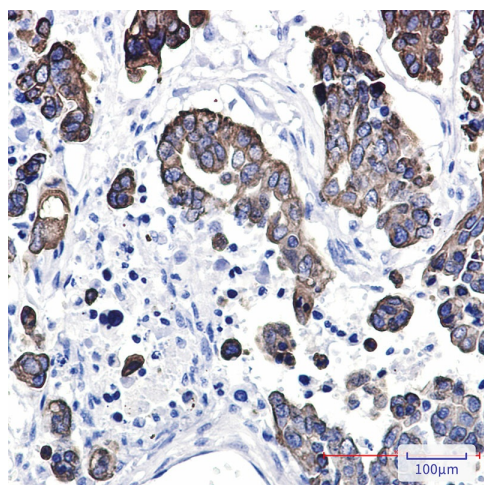


[View online »](#)

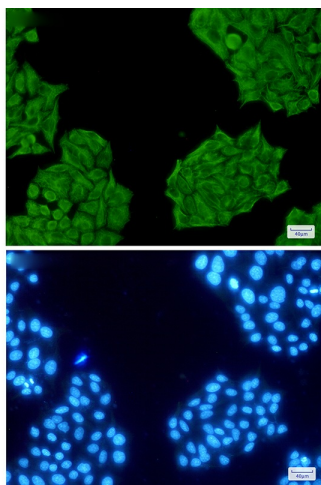
Product images:



Western blot analysis of Keratin 8 in MCF-7, HeLa lysates using Cytokeratin 8 antibody.



Immunohistochemistry analysis of paraffin-embedded Human Cholangiocarcinoma using Cytokeratin 8 antibody. High-pressure and temperature Sodium Citrate pH 6.0 was used for antigen retrieval.



Immunocytochemistry analysis of Cytokeratin 8(green) in HeLa using Cytokeratin 8 antibody, and DAPI(blue)