

Product datasheet for **TA384632**

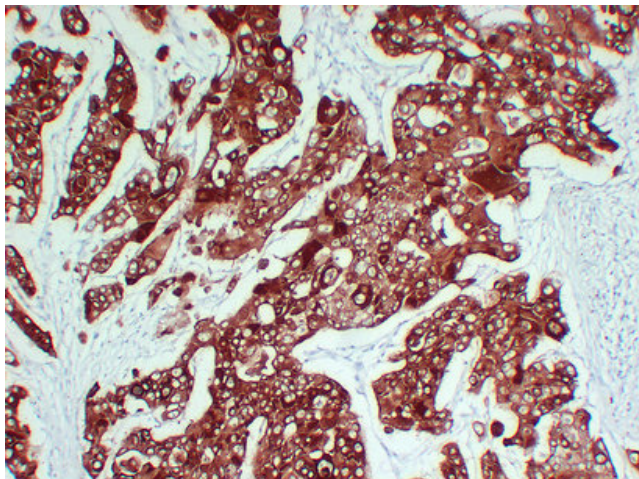
Cytokeratin 6C (KRT6C) Mouse Monoclonal Antibody [Clone ID: 4F10-6D6-3C1]

Product data:

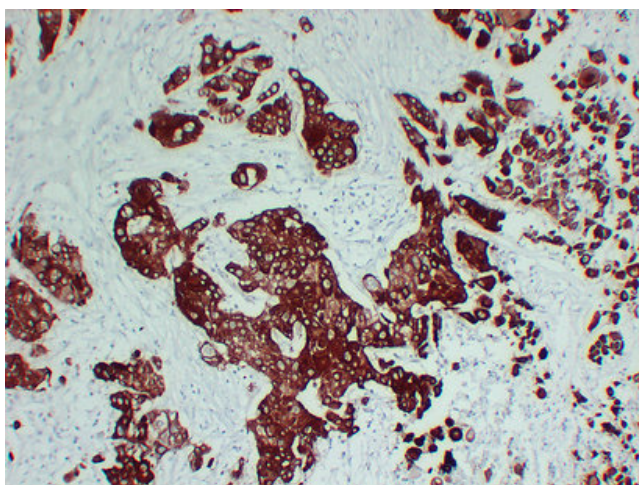
Product Type:	Primary Antibodies
Clone Name:	4F10-6D6-3C1
Applications:	IHC, WB
Recommended Dilution:	IHC-p: 1/100-1/500 WB: 1/500-1/2000
Reactivity:	Human
Host:	Mouse
Isotype:	IgG1, kappa
Clonality:	Monoclonal
Immunogen:	Synthesized peptide derived from human Cytokeratin 6
Formulation:	Liquid in PBS containing 50% glycerol, 0.5% BSA and 0.02% sodium azide, pH 7.3.
Concentration:	lot specific
Purification:	Affinity Chromatography
Conjugation:	Unconjugated
Storage:	Store at 4°C short term. Aliquot and store at -20°C long term. Avoid freeze/thaw cycles.
Stability:	1 year
Predicted Protein Size:	Observed MW (kDa): 60
Gene Name:	keratin 6C
Database Link:	Entrez Gene 286887 Human P02538
Background:	Swiss-Prot Acc.P02538.
Synonyms:	Cytokeratin-6C; Cytokeratin-6E; K6E; KRT6E; MGC102925; MGC163455; MGC163457



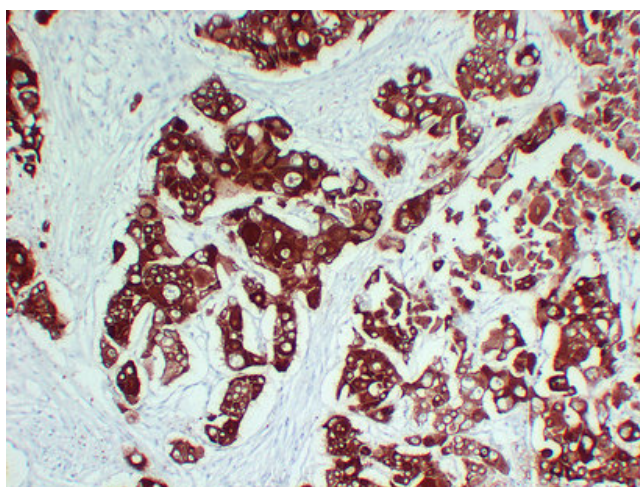
[View online »](#)

Product images:

Immunohistochemical analysis of paraffin-embedded Lung squamous cell carcinoma. 1, Antibody was diluted at 1:200(4°,overnight). 2, TRIS-EDTA of pH8.0 was used for antigen retrieval. 3,Secondary antibody was diluted at 1:200(room temperature, 30min).



Immunohistochemical analysis of paraffin-embedded Lung squamous cell carcinoma. 1, Antibody was diluted at 1:200(4°,overnight). 2, TRIS-EDTA of pH8.0 was used for antigen retrieval. 3,Secondary antibody was diluted at 1:200(room temperature, 30min).



Immunohistochemical analysis of paraffin-embedded Lung squamous cell carcinoma. 1, Antibody was diluted at 1:200(4°,overnight). 2, TRIS-EDTA of pH8. was used for antigen retrieval. 3,Secondary antibody was diluted at 1:200(room temperature, 30min).