

Product datasheet for **TA384631**

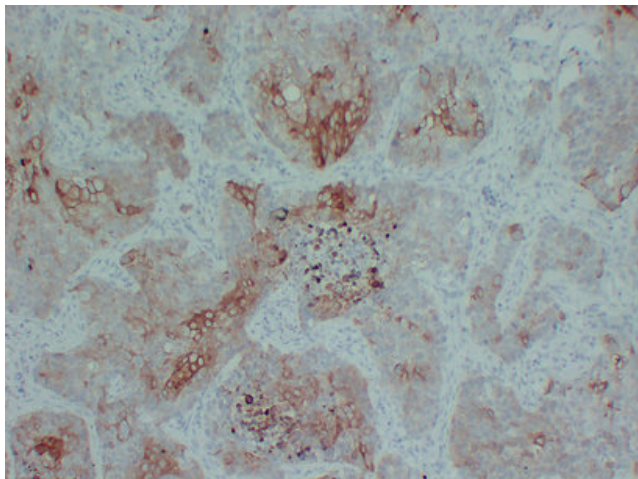
Cytokeratin 5 (KRT5) Mouse Monoclonal Antibody [Clone ID: 5E7-10D10-2C6]

Product data:

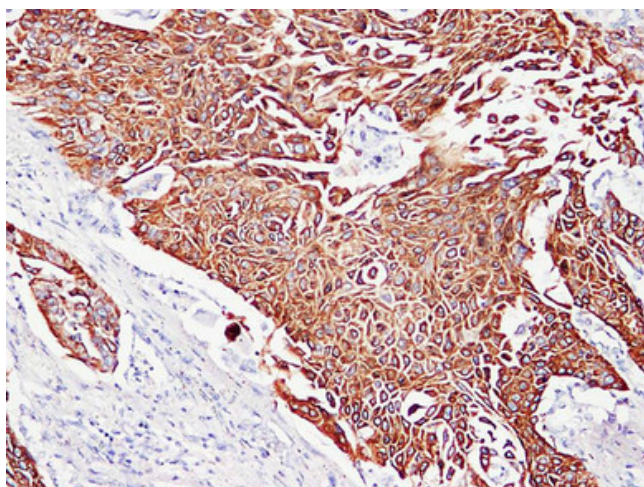
Product Type:	Primary Antibodies
Clone Name:	5E7-10D10-2C6
Applications:	IHC
Recommended Dilution:	IHC-p: 1/100-1/500
Reactivity:	Human
Host:	Mouse
Isotype:	IgG1, kappa
Clonality:	Monoclonal
Immunogen:	Synthesized peptide derived from human Cytokeratin 5/6
Formulation:	Liquid in PBS containing 50% glycerol, 0.5% BSA and 0.02% sodium azide, pH 7.3.
Concentration:	lot specific
Purification:	Affinity Chromatography
Conjugation:	Unconjugated
Storage:	Store at 4°C short term. Aliquot and store at -20°C long term. Avoid freeze/thaw cycles.
Stability:	1 year
Gene Name:	keratin 5
Database Link:	Entrez Gene 3852 Human P13647
Synonyms:	CK-5; CK5; Cytokeratin-5; DDD; EBS2; K5; Keratin-5; KRT5A



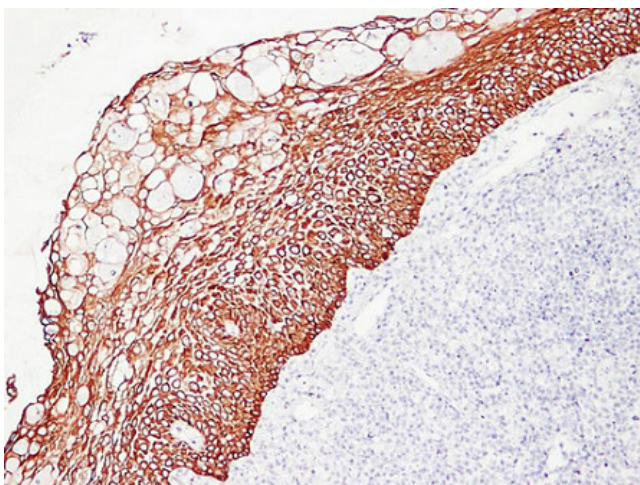
[View online »](#)

Product images:

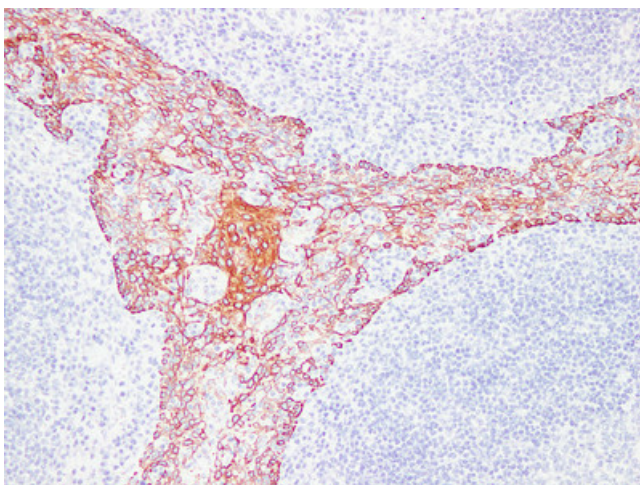
Immunohistochemical analysis of paraffin-embedded Lung squamous carcinoma. 1, Antibody was diluted at 1:200(4°, overnight). 2, TRIS-EDTA of pH8.0 was used for antigen retrieval. 3, Secondary antibody was diluted at 1:200(room temperature, 30min).



Immunohistochemical analysis of paraffin-embedded Squamous cell lung carcinoma. 1, Antibody was diluted at 1:200(4°, overnight). 2, TRIS-EDTA of pH8.0 was used for antigen retrieval. 3, Secondary antibody was diluted at 1:200(room temperature, 30min).



Immunohistochemical analysis of paraffin-embedded Tonsil. 1, Antibody was diluted at 1:200(4°,overnight). 2, TRIS-EDTA of pH8. was used for antigen retrieval. 3,Secondary antibody was diluted at 1:200(room temperature, 30min).



Immunohistochemical analysis of paraffin-embedded Tonsil. 1, Antibody was diluted at 1:200(4°,overnight). 2, TRIS-EDTA of pH8.0 was used for antigen retrieval. 3,Secondary antibody was diluted at 1:200(room temperature, 30min).