

## Product datasheet for **TA384630**

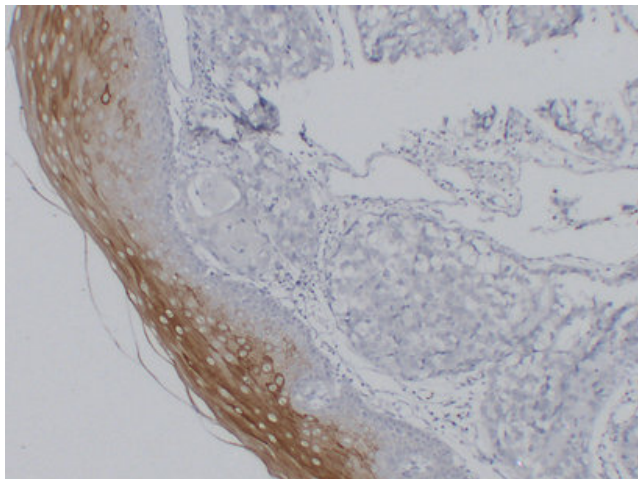
### Cytokeratin 4 (KRT4) Mouse Monoclonal Antibody [Clone ID: 6B5-6H7-9C4]

#### Product data:

Product Type:	Primary Antibodies
Clone Name:	6B5-6H7-9C4
Applications:	IHC
Recommended Dilution:	IHC-p: 1/100-1/500
Reactivity:	Human
Host:	Mouse
Isotype:	IgG1, kappa
Clonality:	Monoclonal
Immunogen:	Synthesized peptide derived from human Cytokeratin 4
Formulation:	Liquid in PBS containing 50% glycerol, 0.5% BSA and 0.02% sodium azide, pH 7.3.
Concentration:	lot specific
Purification:	Affinity Chromatography
Conjugation:	Unconjugated
Storage:	Store at 4°C short term. Aliquot and store at -20°C long term. Avoid freeze/thaw cycles.
Stability:	1 year
Gene Name:	keratin 4
Database Link:	<a href="#">Entrez Gene 3851 Human P19013</a>
Background:	Swiss-Prot Acc.P19013.
Synonyms:	CK-4; CK4; CYK4; Cytokeratin-4; FLJ31692; K4; Keratin-4



[View online »](#)

**Product images:**

Immunohistochemical analysis of paraffin-embedded Esophageal squamous carcinoma. 1, Antibody was diluted at 1:200(4°, overnight). 2, Citric acid ,pH6.0 was used for antigen retrieval. 3, Secondary antibody was diluted at 1:200(room temperature, 30min).