

Product datasheet for **TA384629S**

Cytokeratin 19 (KRT19) Rabbit Monoclonal Antibody [Clone ID: R07-1D4]

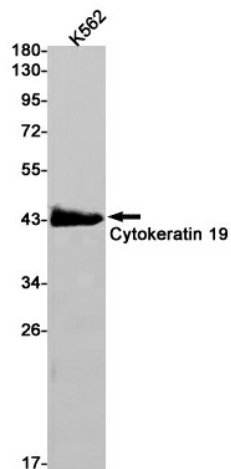
Product data:

Product Type:	Primary Antibodies
Clone Name:	R07-1D4
Applications:	IF, IHC, WB
Recommended Dilution:	WB: 1/1000 IHC: 1/20 ICC/IF: 1/20
Reactivity:	Human
Host:	Rabbit
Isotype:	IgG
Clonality:	Monoclonal
Immunogen:	A synthetic peptide of human Cytokeratin 19
Formulation:	50mM Tris-Glycine(pH 7.4), 0.15M NaCl, 40% Glycerol, 0.01% Sodium azide and 0.05% BSA
Concentration:	lot specific
Purification:	Affinity Purified
Conjugation:	Unconjugated
Storage:	Store at 4°C short term. Aliquot and store at -20°C long term. Avoid freeze/thaw cycles.
Stability:	1 year
Predicted Protein Size:	Calculated MW: 44 kDa; Observed MW: 41 kDa
Gene Name:	keratin 19
Database Link:	Entrez Gene 3880 Human P08727
Background:	Swiss-Prot Acc.P08727.Involved in the organization of myofibers. Together with KRT8, helps to link the contractile apparatus to dystrophin at the costameres of striated muscle.
Synonyms:	CK-19; CK19; Cytokeratin-19; K1CS; K19; Keratin-19; MGC15366

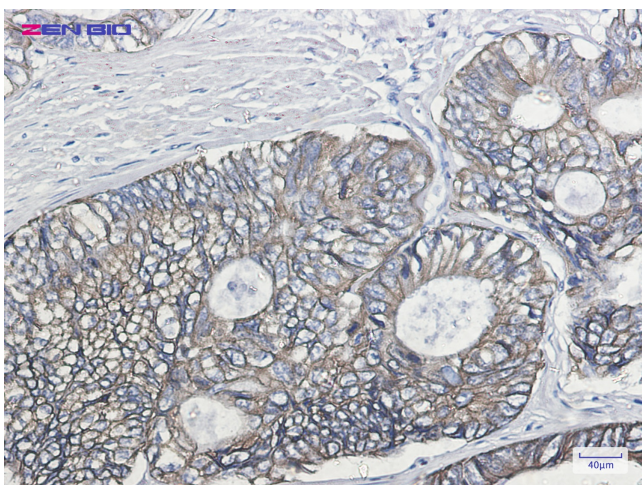


[View online »](#)

Product images:



Western blot detection of Cytokeratin 19 in K562 cell lysates using Cytokeratin 19 Rabbit mAb(1:1000 diluted).Predicted band size:44kDa.Observed band size:41kDa.



Immunohistochemistry of Cytokeratin 19 in paraffin-embedded Human colon cancer tissue using Cytokeratin 19 Rabbit mAb at dilution 1/20